

# **OpenCms 6 User's Guide**

## OpenCms 6 User's Guide

Copyright © 2005-2008 CodeDroids ApS.

This work is licensed under the  
Creative Commons Attribution-No Derivative Works 2.5 License.  
To view a copy of this license, visit  
<http://creativecommons.org/licenses/by-nd/2.5/>  
or send a letter to  
Creative Commons,  
543 Howard Street,  
5th Floor,  
San Francisco,  
California, 94105,  
USA.

All company or product names are mentioned for identification  
purposes only, and may be trademarks of their respective owners.

The information contained in this document is subject to change  
without notice. If you find any problems in the documentation,  
please report them to CodeDroids ApS in writing. CodeDroids ApS  
do not warrant that this document is error free.

For more information please visit: <http://www.codedroids.com>

For more information on OpenCms, please visit <http://www.opencms.org>

# Table of Contents

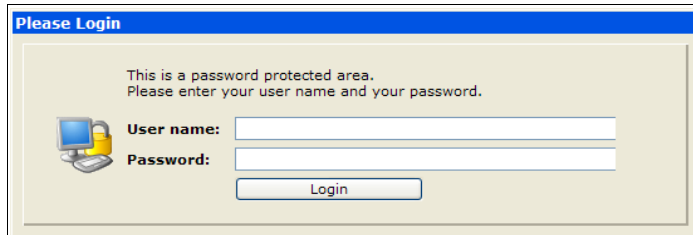
<b>1 Login.....</b>	<b>1</b>
<b>2 The Workplace.....</b>	<b>2</b>
2.1 Workplace tool bar.....	4
2.2 Online help.....	5
2.3 Files and folders.....	6
2.4 New page.....	8
2.5 New Folder.....	10
2.6 Copy resource.....	13
2.7 Change navigation.....	17
2.8 Move/rename resource.....	19
2.9 New sibling.....	21
2.10 Delete resource.....	24
2.11 Undo changes.....	27
2.12 Upload.....	28
<b>3 Editing.....</b>	<b>33</b>
3.1 Page editor.....	34
3.2 Text editing.....	35
3.3 Paste from other programs.....	37
3.4 Tables.....	38
3.5 Images.....	41
3.6 Links.....	47
3.7 More editor functions.....	53
<b>4 Galleries.....</b>	<b>57</b>
4.1 Image galleries.....	57
4.2 Download galleries.....	60
4.3 External links galleries.....	61
4.4 HTML galleries.....	63

# 1 Login

---

In order to access the OpenCms workplace you need a user name and a password. If you do not have this information already you have to contact your system administrator

Point your browser to the address of the workplace and enter your user name and password in the fields and click on the **Login**-button.



*Illustration 1: Only users with valid user name and password can edit the homepage*

Once you are logged in you will be presented with the virtual workplace, looking similar to the screen shown in Illustration 2.

*If it does not look like anything happens once you have clicked on the Login-button it is likely you have a pop up-blocker that prevents the system from opening a new window with the workplace. If that is the case you need to either disable the blocker or set it to allow pop ups from the address. After doing that, you should be able to login.*

OpenCms opens a new window and will try to close the old one. Some browsers will prompt you if you want to close the old window. If that is the case, acknowledge that it can go ahead and close the old window.

If you get an error message when you click **Login** then there can be several reasons. One thing you should check is that the caps lock is off on your keyboard. OpenCms uses case-sensitive user name and password, so you must enter them as given. If this does not help then contact the system administrator rather than keeping trying (as a security measure OpenCms will temporarily block for a user login if numerous attempts is made to login as that user).

## 2 The Workplace

OpenCms is a very advanced system boasting numerous useful features. It is not necessary to know all of them in order to use OpenCms for the daily routines, you can explore the more advanced features of OpenCms as the need arises.

In this chapter you will learn to create new files, delete old ones and so forth. In this manual we assume that you start out with an empty homepage. If you are working on a live homepage already populated with a lot of pages you should of course be careful which changes you make.

Before starting on the editing process, we will present you to some of the basic concepts.

### The Homepage and the Workplace

On one hand you have the homepage as people will see it when they direct their web-browser to it. This will look like any other homepage (apart from the look and the contents) – only you should be able to avoid typical mistakes that you run into on manually maintained homepage, i.e. dead links and outdated information.

On the other hand you have the workplace where you will be working when you are updating the homepage. From a technical point of view this is also a part of the homepage, but a part that only privileged users will have access to. The workplace gives you an alternate view of the homepage, here you can see the pages and images that makes up the homepage. You can add new pages, edit existing ones and delete old ones.

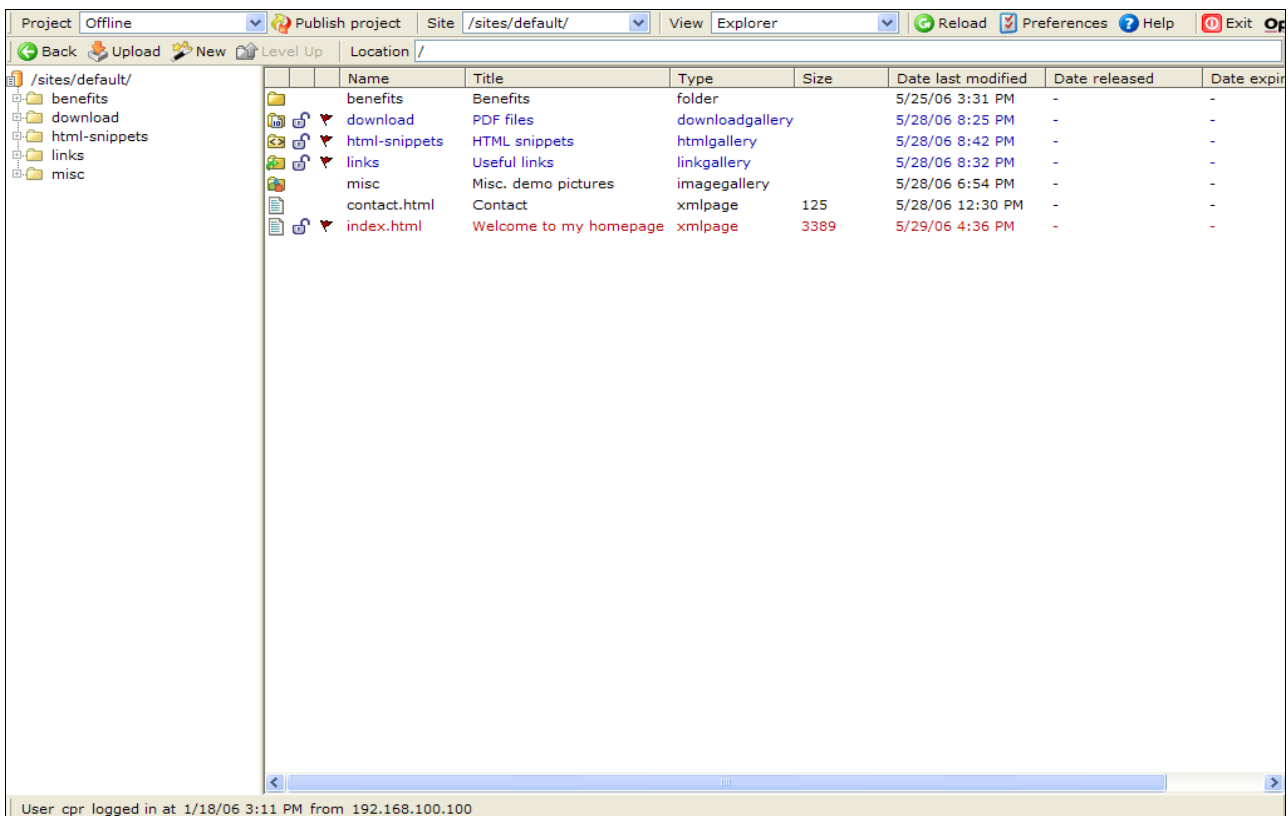


Illustration 2: An example of how the explorer view of the workplace looks like.

For the most of the time you will be using the workplace view called the Explorer. You use the explorer to manipulate the files and pages that you have on your homepage. There are a couple of other, lesser used workplace views: Administration and Workflow.

## Files and folders, a familiar approach

A homepage is basically a collection of pages which typically is organized into various sections on the homepage. A page is represented by a file containing the text for the page. The files are organized into folders, where a folder typically represents a specific section of the homepage.

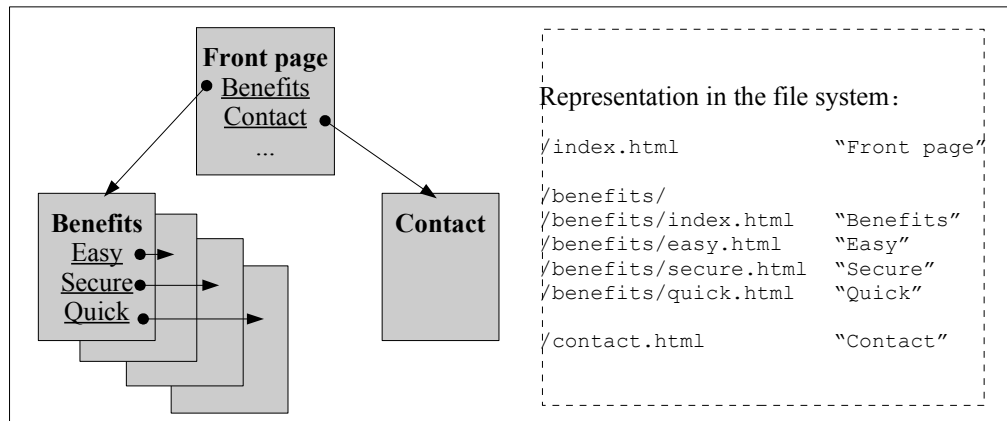


Illustration 3: A homepage is made up of a hierarchy of files and folders.

Illustration 3 shows an outline of homepage, which in this example consist of 6 individual pages. The web user can navigate between the pages by means of the links included in the navigation menus that the pages include.

The illustration also shows the structure as it looks in the explorer where you can see the files and folders that make up the hierarchy and structure of the homepage. The front page is the file called `index.html` placed at the top of the hierarchy. The top-level is marked by the sole slash `/` to the left of the file name. This is the root of the hierarchy which is just a folder, albeit it has a special meaning.

Another folder is the one called `benefits`. This marks a sub-level in the hierarchy – typically this could be a specific section on the homepage. Just like the root-folder this can include files (and other folders). Inside the folder there is an `index.html`, which servers as the overview for the Benefits-section of the homepage. The details about the benefits are shown in the other pages in the folder (`easy.html`, `secure.html` and `quick.html`).

You use the workplace explorer view to work with the files and folders in the virtual file system (VFS). We use the term VFS to distinguish this from the file system you have on your local PC and the file system on the server where OpenCms is running. The VFS in many ways acts like any other file system and thus gives you a head start as you already is familiar with the basic operations. But the VFS also includes features specifically target at serving web pages which makes it better suited for building web sites.

## Users, permissions and projects – tools for cooperation

OpenCms supports multiple users working on the same homepage. To that end OpenCms works with a number of concepts such as users, permissions and projects. These enables multiple users to work on the homepage at the same time without getting in the way of one another.

And even if you are the only one editing the web site, some of these features can be very useful. Especially the concept of projects can be helpful.

As an example you could have a project that you can use for small daily changes such as correcting typos. At the same time you can have another project specifically for building a new section on the homepage – typically adding a new section will be done over a longer period of time. By using different projects you can safely do the daily updates without accidentally publishing some unfinished pages from the new section. And once the new section is finished, you can publish all pages, images and what have you with just one click on a button.

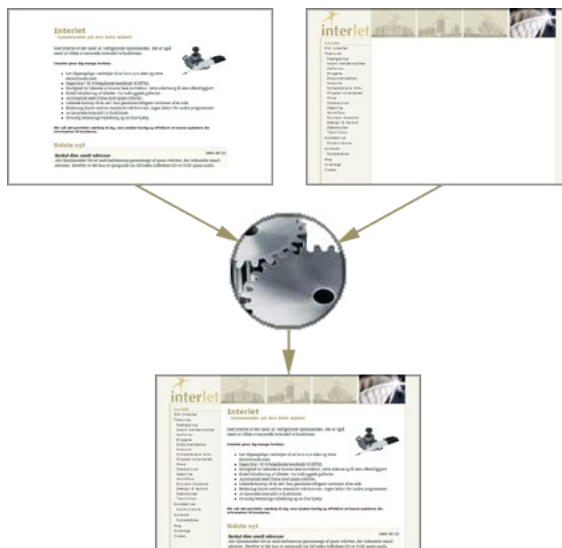
There is always one special project – the Online project. This project represents the published version of the homepage. All the changes you make in the other projects happens ”offline”, i.e. they have no effect on the published web site. That is until you explicitly publish the changes.

Publishing is the final step to be performed in the process of making changes to the homepage – before that step all the changes you make to the homepage are hidden from the public view.

## Templates, the page assembly line

An important part of OpenCms is that it separates the 'fixed' elements, the layout and design of the homepage, from the actual contents on that pages (articles, news and so forth). You can concentrate on writing the contents and do not have to worry about getting the page header in the correct position or update the navigation menu. OpenCms does that for you.

The pixie dust that makes this happen is the template mechanism. You can think of it as an assembly line where the various parts such as header, footer, navigation and the content you provide for the page, is put together to form the final page as presented to the viewer.



If you have ever tried to maintain the navigation for anything but the simplest homepage, you will know how big a relief having this done for you is. Once the appropriate templates for your homepage are created, you simply choose one of them for a new page and then goes ahead and enter your article, feature or what have you. The template mechanism will then ensure that the resulting page is consistent with the rest of the pages on your homepage.

Besides making it easier to begin with, templates also makes subsequent maintenance of the homepage much easier. You can later switch the look of you homepage simply by altering the templates, you do not have to touch the contents on the pages since it is separate from the layout.

## 2.1 Workplace tool bar

Illustration 2 shows an example of how the workplace looks. At the top you have the workplace tool bar. Below is the work area and its contents changes according to the selected view.

The workplace tool bar is always visible unless you are inside an editor. It holds a number of functions common to all the different workplace views.

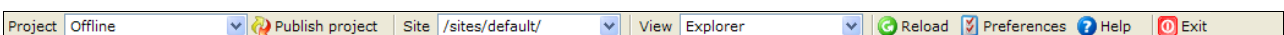


Illustration 4: The workplace tool bar is visible in all views, only exception is when you open an editor.

The **Project**-selector shows the current project. You can use it to switch between the available projects.



**Publish project** is used to publish an entire project, i.e. to publish all changes made as a part of the project.

The **Site** selector allows you to switch between different web sites managed by OpenCms. The selector is automatically hidden in case there is only one web site.

The **View**-selector shows the name of the current view. A typical OpenCms installation has three views: Explorer, Administration and Workflow. For the day to day activities you will be using the explorer most of the time so we will concentrate on that in this manual.



The Reload button is useful to update the display of the workplace. This can be useful if you want to see changes in the file system made by other users.

*In case of network problems or you have been logged in for a very long period of time without actually working with the workplace, the currently displayed information is unlikely to be up to date. A reload will update the window to reflect the actual state.*



**Preferences** is where you can edit your personal preferences, such as how the workplace should look when you log in. You can also use it to change your password.



The **Exit**-button logs you out of the workplace. You should log out of the workplace whenever you are not at you PC.

*Note that merely closing the window will not log you off the system immediately. There is a timeout period that will have to expire before the systems logs an inactive user off. In that period of time someone sitting at you PC may be able to get back into the system assuming your identity. So remember to log out explicitly by means of the Exit button.*

## Workplace status

At the bottom of the window you can see some status information, such as your user name, login time and so on.

## 2.2 Online help



The online help is context sensitive. This means that it will try to find the most appropriate help information based on what you are doing in the workplace.

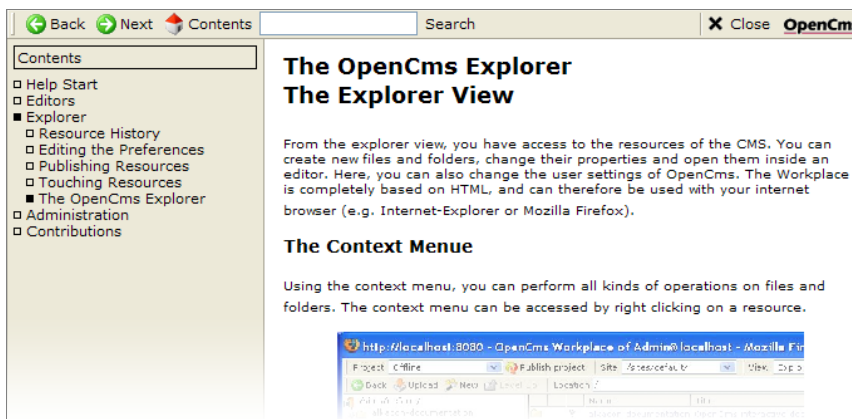


Illustration 5: The online help provides short explanations on various subjects

Click the **Help**-button to open the help window.

Illustration 5 shows an example. Use the contents to the left to select between the various subjects.



The **Back** and **Next**-button lets you go back and forth among the help pages you have viewed. You also have the possibility to search the help contents.

The online help is not a user manual, but rather a supplement to this user manual that your are reading now.

## 2.3 Files and folders

As you saw in Illustration 3, your homepage consists of a number of files and folders, reflecting the structure of the homepage.

In the day to day work with OpenCms you will be working with the files and folders in the virtual file system. This is in many ways similar to what your are used to do on your PC. Though OpenCms' virtual file system has some extra features which makes it better suited for handling home pages compared to what you know from your PC.

*The virtual file system can store many different types of files (pages, images, documents and so forth) and folders. We use the more generic term "resource" to cover all the different types.*

To navigate and work with files and folders you use the Explorer view. The explorer consists of three parts. Left-most you have the overview of the folders on your site. To the right there is a top part is the explorer tool bar and below is the resources of the currently selected folder. We will refer to the latter as the resource list.

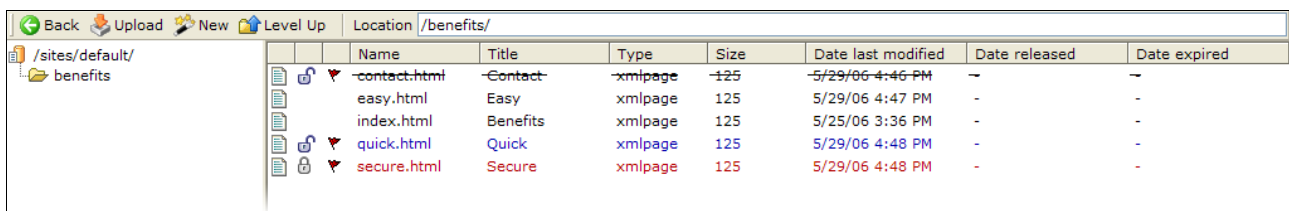


Illustration 6: An example of how the various files and folders on your site is represented in the explorer view.

In the folder overview you click on the name of a folder, this will show the contents of that folder in the resource list. Click on the plus- or minus-button to the left of the folder name in order to reveal or hide any sub-folders of the folder.

Besides navigating by means of the folder overview, you can navigate by clicking on the folder name in the resource list (this is the text in the **Name**-column).

If you click on a file in the same way, it will open a new browser window showing the contents of the file – this way you can test the look of a page in you web browser.



Illustration 7: The explorer tool bar is used for navigating the contents of the site, and for creating new pages.



**Back** returns you to the folder you visited before the current one. Use this to back track your way similar through the virtual file system..



**Level up** takes you to the parent folder for the current folder. You can only go up as far as the selected sites root folder.

The **Location** field shows you the path of the current folder, i.e. the folder who's contents is shown the resource list. You can also enter the location of another folder into the field and press return – this will display the and thusly jump directly to that location.



**New** is used to create a new file or folder. This function is disabled if you are in the Online project since no changes can be made in the Online project.



**Upload** opens a new screen where you can select files on your local PC to be uploaded to the OpenCms system. There are two tools for this function, which one is used depends on your settings in the preferences.

### File names

The names you give to files and folders in the virtual file system eventually ends up as a part of the web address (URL) in the users web browser. To avoid problems with differences between various browser and operating systems, OpenCms limits the characters allowed in resource names. It only allows characters that are safe across browsers and operating systems. Following characters are allowed: a-z, A-Z (OpenCms is case sensitive), '-', '\_' (dash and underscore) and '.' (period). Use dash or underscore instead of spaces.

*When it comes to the names on files and folders, OpenCms treats uppercase and lowercase as distinct cases, e.g. `Frontpage.html` and `frontpage.html` are different names. Despite of this we recommend that you always use lowercase characters – for certain resources OpenCms has to rely on the file naming conventions dictated by the server operating system and this may or may not be case sensitive.*

The name you give a file or a folder is mostly read by programs such as your web browser and perhaps search engines. In any case, try to give a meaningful, short name – mostly for your own sake as it makes it easier to remember what the file is all about. But more important is the title that you can assign to a file. This title is more relevant as it is shown in the title of the browser window and is often used by search engines as well. The title is not restricted as to what characters you can use. So you can use special national characters as well as spaces and so forth.

### State

The resource list shows further information besides the name and title of the resources. Two useful columns are the lock and state columns (the two columns following the first column with document icon).

A file that has changes compared to the same file in Online-project is marked by a small flag in the third column. Furthermore the type of change is indicated by the color of the text for the resource. If it is a new resource, then the text is shown in blue, if the file has been changed since it the last time it was published then it is marked by a red color.

Illustration 8 shows that `quick.html` is a new file (blue), whereas `secure.html` has been changed since it was last published (red). The other files have not been changed since the last published.

	Name	Title	Type	Size	Date last modified	Date released	Date expired
	contact.html	Contact	xmlpage	125	5/29/06 4:46 PM	-	-
	easy.html	Easy	xmlpage	125	5/29/06 4:47 PM	-	-
	index.html	Benefits	xmlpage	125	5/25/06 3:36 PM	-	-
	quick.html	Quick	xmlpage	125	5/29/06 4:48 PM	-	-
	secure.html	Secure	xmlpage	125	5/29/06 4:48 PM	-	-

Illustration 8: The explorer shows the status of the pages, and whether they are locked or not.

Entries in the resource list may also be shown in a gray color (dimmed), this indicates that the resources are not available to you. This may be because of the type of resource or the permissions set on the resource.

Finally, if the text is shown in italics it indicates that resource (at the time the list is shown) is outside the release period (given by its release and expire dates).

### Locking

In order to facilitate multiple user working on the same homepage, OpenCms will lock resources in order to prevent more than one users from editing the same page at the same time.



In the resource list locked resources are marked by a small padlock. In the example in Illustration 8 `secure.html` is locked. This means the file has been locked by another user and you cannot edit the file as long as that user has not released the lock.



Looking at `quick.html` you will see an open padlock. This means that the resource is locked by you. To any other user that lock is shown with the closed padlock.



There is a third type of lock. This is used in relation with siblings, i.e. files that share the same contents. If you have locked one of the siblings, then the other siblings with the same content will show the padlock shown here.

You can lock folders as well. Locking a folder will indirectly lock all the resources inside the folder including sub-folders and their sub-folders and so on.

*If you work inside a folder that you have locked, then you can work as usually just as if you have locked say a file directly. The only difference is that it is not locked directly and hence you cannot unlock it directly. In this case you must remove the lock on the folder rather than on the individual resources inside the folder.*

## 2.4 New page

If you start work on a new homepage with OpenCms you may or may not have an `index.html` file in the root folder. If you have it your workplace should look something like in Illustration 9. There may also be an `index.jsp` page – just ignore it for now – OpenCms will choose the `index.html` over the `index.jsp` if both are present. If you do not have the `index.html` already you can create it as an extra exercise by following the same steps as shown below.

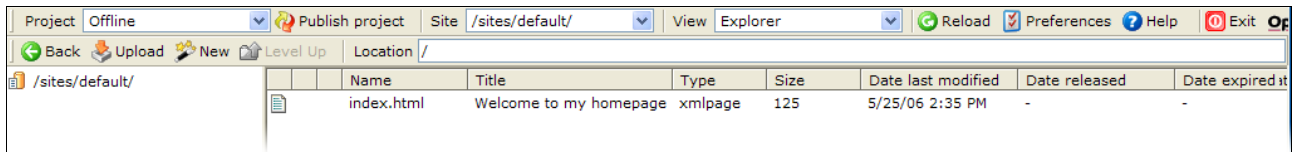


Illustration 9: The explorer shows that there is only one page on the web site.



Choose the **Offline** project with the project selector if you are not already in the offline project. Next click the **New**-button.

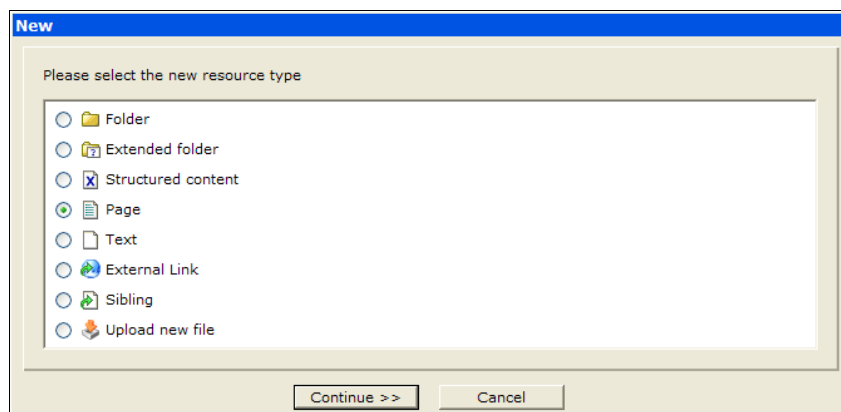


Illustration 10: Page is the most commonly used file type.

Choose **Page** and click **Continue >>**.

You will now be presented with a screen as shown on Illustration 11. Here you among other things provides the resource name – following the naming convention described in 2.3 Files and folders (p. 7).

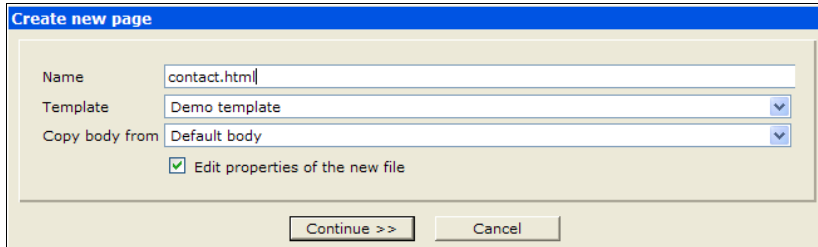


Illustration 11: Provide the name, select the wanted template and possibly predefined contents.

Name the page `contact.html` and choose `Demo template` as the template for the page. The template decides how the page will look when shown on the homepage. Typically there will be 2-3 templates for a site – often the front page gets its own template because the layout differs significantly from that of the other pages.

Check the **Edit properties of the new file** box. If this is not checked then the next step is skipped and you will not be asked to set the properties on the file. It is possible to skip setting properties in this and do it at a later point in time if the need arises.

In some cases there may be predefined contents that will ease your work so you do not start with a blank slate. E.g. if you have a lot of product pages, then making a body with the basic structure may save you time (this is kind of a template for the content itself, but do not confuse it with the 'real' template). We do not need it here so leave the **Copy body from**-field empty.

Click **Continue >>** to go to the next screen, see Illustration 12.

Here you can set a number of properties for the file, such as title, keywords and so on. The fields you see here apply to pages, other resource types have different sets of properties that are relevant to them. The most used types do have both a simple and an advanced view of the properties. Most of the time you will only need to use the simple version, we will look at the advanced screen later on.

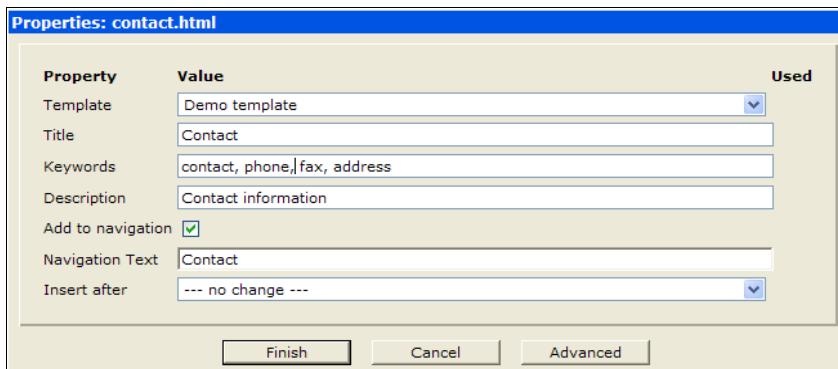


Illustration 12: Pages requires that the template property is set.

You can choose the template here as well, for files of the page-type the template property must be set.

**Title** gives you possibility to name the page without the restrictions that apply to the file name. The title is shown in the resource list, but just as important it will typically be shown in the web users browser window title.

Search engines may also choose to list the search hit for the page using the title as the heading. So give it a useful title.

**Keywords** are primarily intended to serve as guidance for search engines when they index the page. Separate the keywords with commas, e.g. “contact, phone, fax, address”.

**Description** is primarily intended as a help to search engines. The intention is that they should show the description as a part of their search result listing. They may choose a different policy, but at least the search engine built into OpenCms will make use of it so you can use the description with the search page on your own site.

The next item requires a little explanation. One of the clever and time-saving features that OpenCms offers is its ability to maintain the navigation menus you have on the site. Maintaining large web sites without this kind of functionality is a nightmare.

You need to specify a label and a position for a given entry in the navigation menu, this is where you do it. There may also be instances where you do not want the page to appear in the menu, in that case you just leave the **Add to navigation** unchecked.

When **Add to navigation** is checked the page will be included in the navigation menu, and you must provide a label and a position to determine how and where it appears in the menu. The label is set with the **Navigation text**-field. While the navigation text may be the same as the page title, it often is a shorter text. Often the space allocated to menu texts in the page layout is limited and it is necessary to take this into consideration.

*Normally the buttons in the navigation is build with text. Combined with the capabilities of modern web browsers it is possible to create nice looking buttons directly from navigation text. Some layouts do use small images instead of texts – such layouts will need an alternate way to determine which images to use for which menu entry. But even in this case you should provide the correct navigation text since it still serves as an help for visually impaired web users.*

Finally you should indicate the order in which the entries in the menu should appear. Here we will leave **Insert after** as it is, as we currently do not have any other entries to relate it to.

You should now have a screen looking like Illustration 12. Click **Finish**.

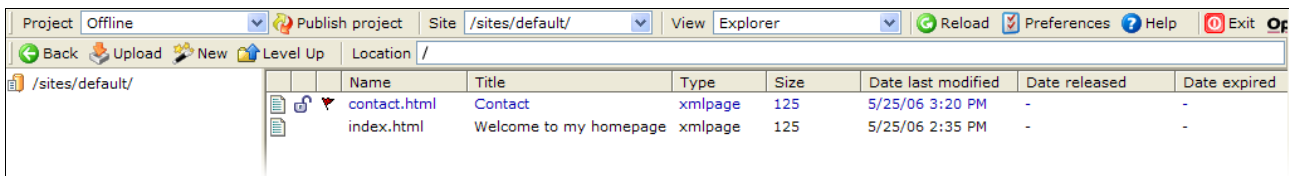


Illustration 13: The new page is now listed in the resource list.

You are returned to the explorer and you can see the new file – `contact.html`. If you click on the name of the new page and thus shows it in a new browser window, you will see that the resulting web page is not empty, even though we have not entered any text at this point in time. The content shown in the web page is generated by the template assigned to the file. In the next chapter you will get to edit the content, but leave it as it is for now.

If you do not already have the `index.html` in the root folder, then repeat the steps to create it. This time, do not check the **Add to navigation**.

If you open either of the two new pages you will notice that the menu only shows the contact entry since you did not add the front page to the navigation.

## 2.5 New Folder

You now have a couple of pages both placed in the root folder. It is called the root because it is the starting point on the homepage. If nothing special is done in the setup of your site, web users that enters your web address in their browser (e.g. `www.codedroids.com`) will be presented with the `index.html` page in the root folder.

On your PC you organize your documents in different folders, typically categorizing them so it is

easier to locate the documents when needed. You do exactly the same on your homepage. Illustration 3 shows an example.

We will create a new section on homepage describing the benefits of our product and we will do it by creating a new folder. This folder will hold all the pages for the new section.

Besides the obvious advantage of having the pages organized in a logical structure, the use of folders and sub-folders also makes it easier to reap the benefits of the automated navigation menu builder that OpenCms provides.

Generally it is recommended to create a folder if you at some point think that the section on the homepage eventually will consist of more than one page – even if you only have one page to begin with.



Choose the Offline-project with the project selector if your are not already in the Offline project. Click the **New**-button.

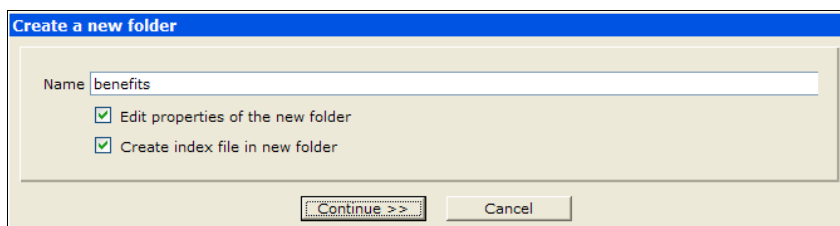


Illustration 14: Folders is a useful concept when it comes to organizing the homepage

Choose **Folder** as resource type and click **Continue >>**.

You are now presented with the **Create a new folder**-dialog. The name follows the same rules as for file names, though you should not use the .html extension on folders (or any other non-page resources). Name the folder `benefits`.

As for files you can choose to **Edit properties of the new folder** – leave it checked for this example.

**Create index file in new folder** should also be checked. This will cause OpenCms to continue with creating an index file in the news folder once the folder is created

*Pages called `index.html` (or `index.jsp`) have special meaning. If you type the address of a folder in the address field of your web browser it will actually display the index file inside that folder. E.g. the address (URL) `http://www.something.com/benefits` will automatically be translated to this URL: `http://www.something.com/benefits/index.html` and the browser then shows that page.*

*It is possible and sometimes desirable to have a folder that does not contain an index file. But in that case this mechanism will not work – so if the user types in the address of a folder without an index file he will get an error message stating the fact.*

Click on **Continue >>** to go to the **Properties** dialog (see Illustration 15)

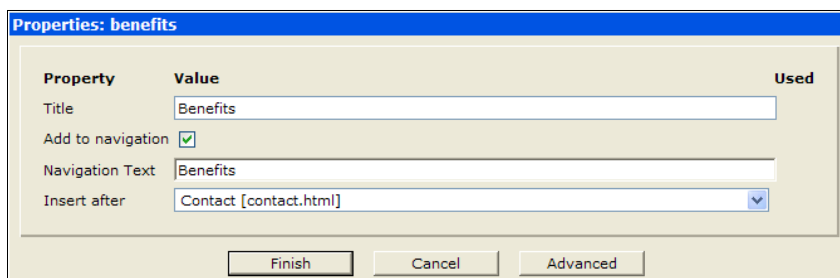


Illustration 15: If you choose to add the folder to the navigation you also place an index page inside the folder

The title of a folder is shown in the resource list as for files, so giving it a descriptive title is a good idea in any case. But in relation to the user web browser and search engines the title of a folder has no significance. This is because the web browser does not show the folder, rather it shows the index page inside the folder (so the title of the index page matters).

**Add to navigation** works as for files. Since we would like to be able to navigate to the pages inside the folder (section) via the navigation menu, we need the folder to appear in the navigation. Click **Add to navigation** and enter `Benefits` in the **Navigation Text** field and click **Finish**.

OpenCms now creates the folder and automatically continues to the **Create new page** dialog. This happens because you checked **Create index file in new folder**. Since OpenCms knows that this page is going to be the index page it has already set the name to `index.html` (as in Illustration 16). So you just have to select the appropriate template and click **Continue >>**.

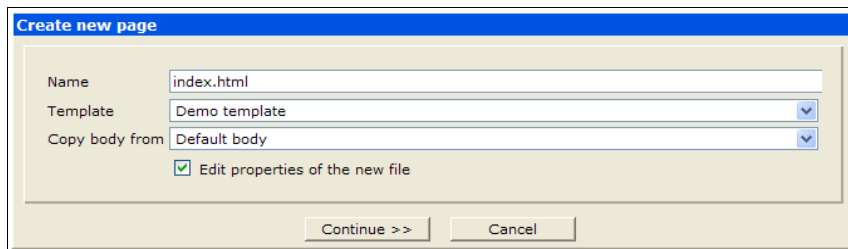


Illustration 16: Index pages in folders should always be named `index.html`.

The properties should be set as for the other pages. Though **Add to navigation** must remain unchecked.

You typically do not want the index page inside a folder to appear in the navigation menu as it is the folder itself that appears in the navigation menu. Ultimately it is the layout of your pages that decide which approach is the better – with the template we use for our examples, the index page should not be added to the navigation.

*If you add the index page to the navigation you would get an entry for the folder and one for the index page inside the folder. As explained above clicking on the folder entry will show the index page as well, so you would now have two menu entries pointing to the same page. This may confuse the web user which of course is not something to strive for.*

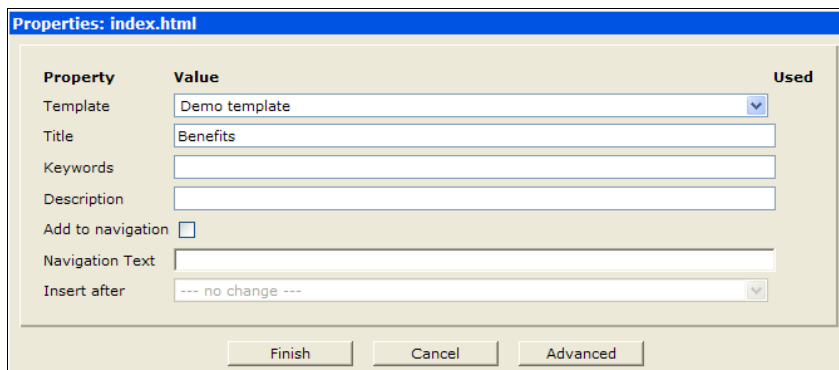


Illustration 17: Index pages should normally not be added to the navigation.

Click **Finish** to create the index page and return the explorer.

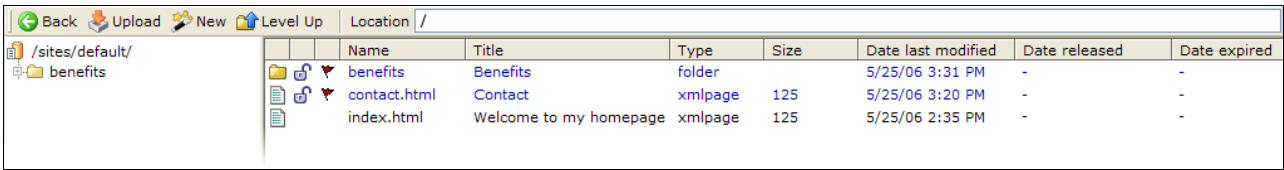


Illustration 18: The left-most column show an icon indicating the resource type. Folders also appear in the folder overview to the left.

You can now see the folder in the resource list as well in the folder overview to the left of the resource list. In either place you can click on the name of the folder to navigate into the folder so the resource list shows the contents of the folder. Click on `benefits` to show its contents

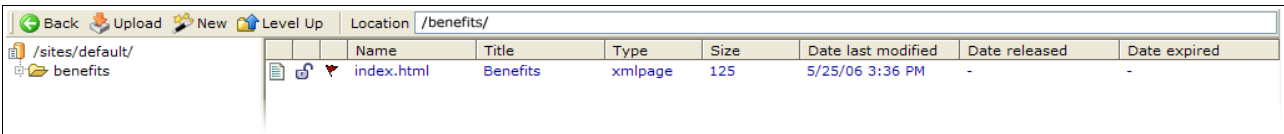


Illustration 19: The location field echoes the path to the currently selected folder.

Illustration 19 shows how the newly created index page inside the folder.

We will need a couple of other pages inside this folder (following the example from Illustration 3). First create a new page with the name `easy.html`, and `Easy` as title and navigation text. Position it as the last in navigation. This is the default for newly created pages if you do not change **Insert after**-setting.

You should now have two pages in the `benefit`-folder. Now we will use a different way to create the last couple of files.

## 2.6 Copy resource

If you have a page which you would like to reuse or use as starting point for a new page, then you can copy it. Here we will make a copy of the `easy.html` page.

Click on the document icon for `easy.html`. This will open the context menu. Select **Copy**.

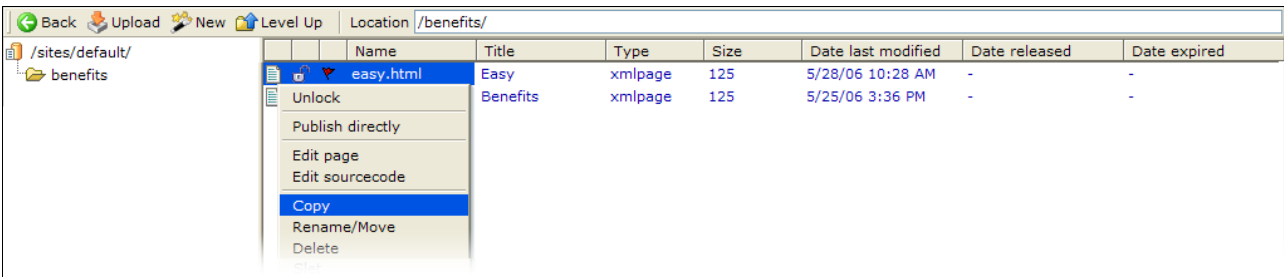


Illustration 20: You can copy both files and folders.

In the **Copy resource**-dialog you must enter the name of the new file. In this case we just copy inside the same folder you just need to type the name of the new copy – name it `secure.html`.

Besides the name you also have to specify whether you want to create a copy or make a sibling. Siblings will be treated later on, here we need a copy so just leave it as its default setting **Copy the file as new resource**.



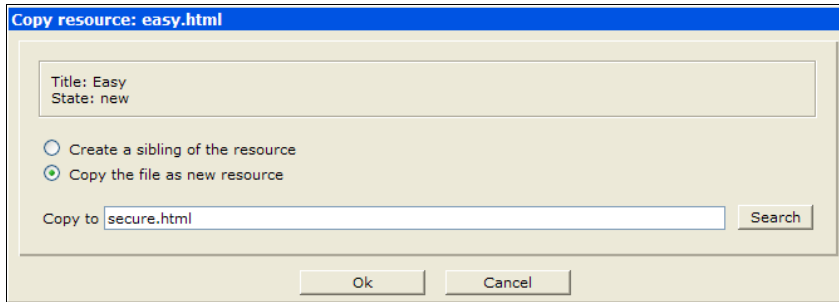


Illustration 21: You can enter the name in the field or use the search function.

If you want to copy the file to another folder, you can either enter the path in the **Copy to** field or you can click on the **Search** button. The latter opens a new window from which you can select among the existing folders. If you select or enter a path to a folder in the field, the new copy will be created in that folder with the original file name.

If you enter a path with a file name, then the resource is copied to the folder with the new filename. If the copy should end up in the current folder you only need to enter the new file name for it as we did in this example.

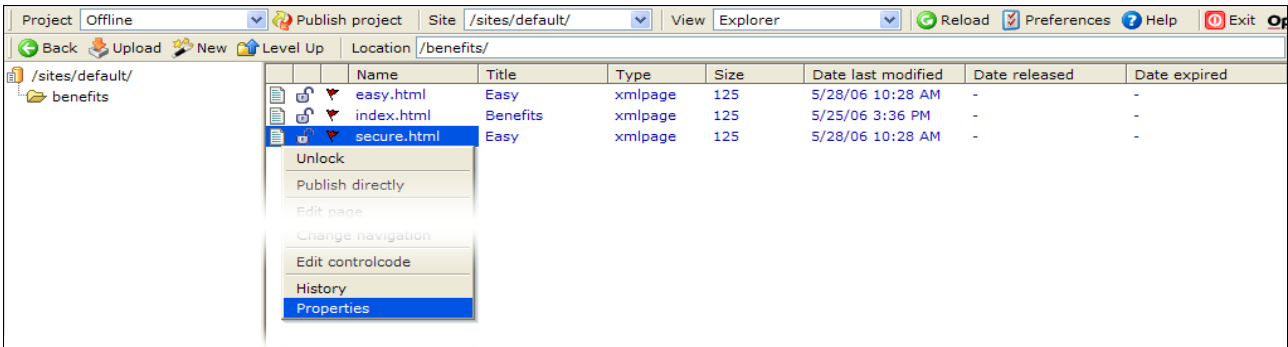


Illustration 22: You can edit the properties of the files and folders after you have created them.

Once you click **OK** you are returned to the explorer. As you can see from the illustration the copy has the same title as the one we copied from. When you copy a resource the properties on that resource are copied as well. Thus the title and navigation text on copy is the same as on the original, so we will have to change them.

Click on the document icon for `secure.html` and choose **Properties** from the context menu. This opens the **Properties** dialog. Here you can alter all the properties for the selected resource.

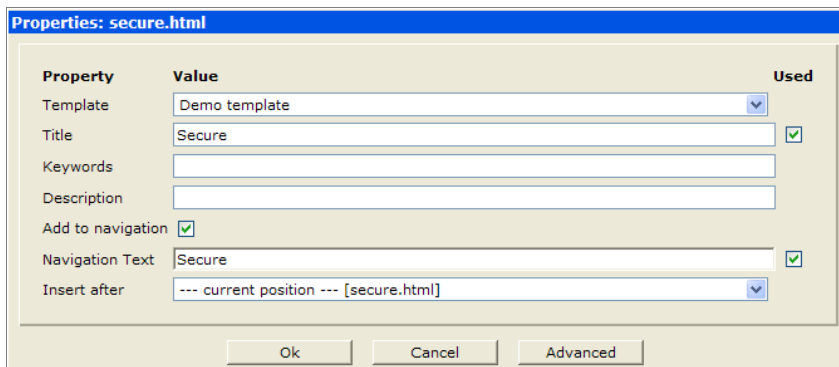


Illustration 23: This shows the properties for a page. Other resource types may have a different set of properties.

Change the title and the navigation – you can change other properties as well, though it is not necessary for our example. Click **OK** to return to the explorer.

Repeat this exercise by making a new copy named `quick.html`, with the title and navigation text set to `Quick`, place it at the last position in the navigation menu.

## The result...

Let us take a breather and see what we have created so far. Apart from the fact that you actually have not entered any content on the pages you have created, you have actually created the structure for a homepage.

You have a front page – the `index.html` in the root folder. You have another top-level page (`contact.html`) and you also have a new section on the homepage (the `benefits` folder) with a number of pages relevant for that section. By adding more folders, sub folders and pages in the same way, you can build even the largest and most complex home pages.

But... if you are working on large site it is a good idea to actually plan ahead. Make diagram outlining the homepage in term of the sections and page you want. Put yourself in the place of the visitors you want to attract to your homepage. What is it they are looking for, how do you make it easy for them to find the relevant information and so on.

Lets look at our example, you should have 4 pages in the `benefits` folder as shown in Illustration 24.

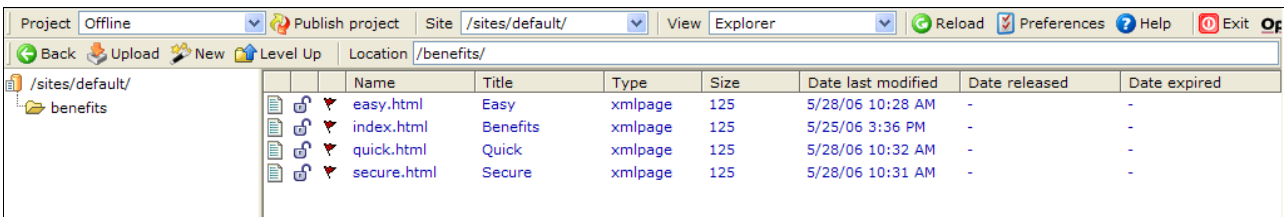


Illustration 24: The content of the new folder in the Offline project.



Click on **Level up** to go one step up in the folder hierarchy. In this case we then return to the top-level – the root folder (indicated by the single slash / in the **Location** field).

You should have a resource list looking like the one below:

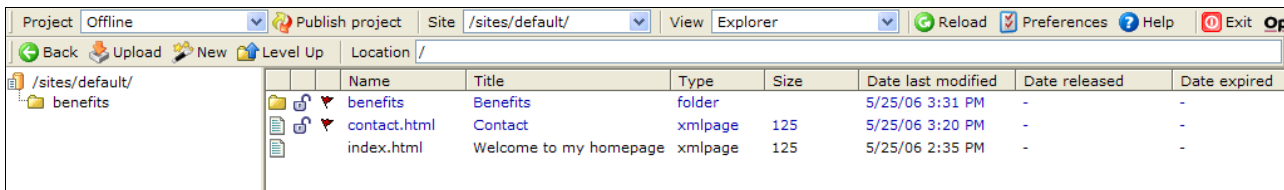


Illustration 25: The index page in root folder is usually the front page of the homepage.

Click on `index.html` (in **Name**-column in the resource list) to open a new browser window showing the homepage as it currently looks.



Illustration 26: OpenCms automatically constructs the navigation menu so the web user can navigate between the various pages on the site.

Whether or not you see the welcome text depends how you created the index page, but apart from that, everything else is generated by the template mechanism. This includes build the navigation menu so it reflects the structure of your site. Since this is done dynamically the navigation menu always reflects the structure of the homepage – no more menu items that point to pages that do not exist.

The text on the navigation menu items are taken from the navigation text you have provided for the pages, the same goes for the order in which they appear in the list.

You can navigate between the pages. While they may look the same since they are all empty the different titles on the pages are shown in the top part of the window frame.

When you are done testing close the browser window and return to the browser window with the OpenCms workplace.

So far you have been working in the Offline-project. Changes made to this project (and other offline type of projects) are not visible to the visitors on the public web site. To see the changes made in the offline projects you must be logged into the system.

If you want to see how the public version of the site looks like, choose the Online project from the **Project**-selector. The explorer now shows what files and folders that are available to the public version of the site. The example below shows that there is only the front page itself, yours may be entirely empty or have another index pages (`index.jsp`):

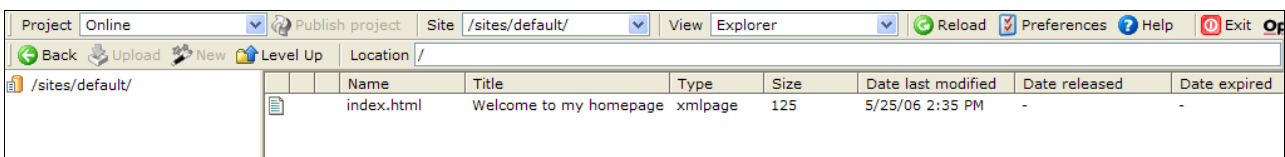
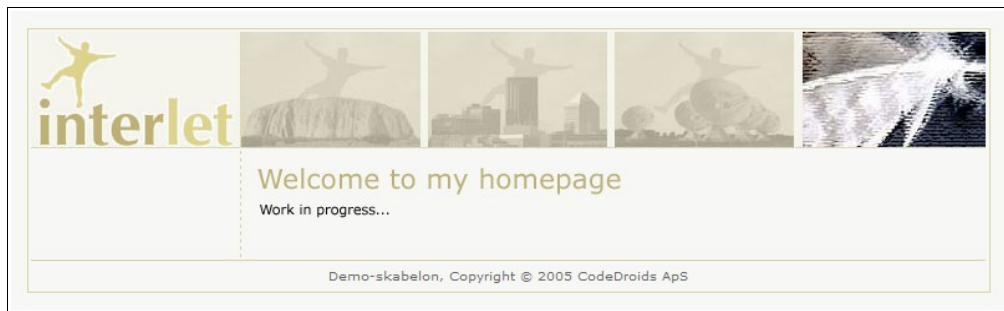


Illustration 27: The Online-project only holds the resources that have been published.

Try looking at the page in the web browser when in the Online-project – click on the name in the **Name** column). You will notice that the front page no longer contains the navigation menu, since there are no other pages to navigate to. Switch back and forth between the Offline and Online projects to see the difference.



*Illustration 28: The public version of the homepage only shows the pages in the Online project*

As you can see the project concept allows you to work in an offline project without having to worry about it effecting the public version of the web site (the contents of the Online project). You can actually have a number of offline projects, this is especially useful if several people are making changes to the homepage.

When your are done with all the work that needs to be done in a particular project, you can go ahead and publish all the changes made to the homepage as a part of that project. This way all related changes are published at the same time and you are ensured a complete and consistent homepage.

You can publish resources individually – by selecting **Publish directly** from the context menu. This is useful if you just have made a change to a single file, e.g. corrected a typo or likewise.

If you have made a number of changes then it is better to publish the project in one go. Usually you would not publish a project before you have written the contents for the pages, but we will do it anyway in this example (we get to the editing in the next chapter).



Choose the Offline-project in the **Project** selector and click **Publish project**.

OpenCms will prompt you just to make sure that you really want to go ahead – click **OK** to continue.

Next OpenCms will prompt you for another confirmation in case that one or more resources belonging to the project are locked. If several people are working in the same project it is crucial to be sure that all other have actually finished what they are working on. You should therefore unlock the pages when you are done editing them, to indicate that you have finished working on them. With this in mind you can see why OpenCms prompt for a second confirmation if it finds that one or more of the resources are still locked. In our example we know that it is safe to let OpenCms remove the locks and continue publishing – so click **OK** to continue.

OpenCms now start the publishing process. This is a very complex process which may include exporting certain resources as well as indexing other resource for the built in search engine. Depending on the amount of changes and the server on which OpenCms is running this may take several seconds to finish. Your browser view will be refreshed with regular intervals so you can follow the process as it progresses – when it is finished the last line in the progress report will read ... the resources have been published. Click **OK** to return to the explorer view.

By opening the homepage in the browser in the Offline and Online-project you will now see that they are identical. Looking in the resource list in the Online project you will see the folder and the new files you created in the Offline-project. Switching to the Offline project you will see that the various markers that indicate changes compared to the Online version are gone – this indicates that no changes have been made to the Offline-project since the last time it was published.

## 2.7 Change navigation

If you have followed the previous exercises precisely, you will notice that the front page itself is not visible in the navigation menu since you did not add it to the navigation (see Illustration 26). This is not an unusual way to do it, as long as you can get to the front page by other means. The demo template does not provide other ways to get to the front page. Since we really want to be able to get

back to the front page by just clicking on a link, we will change the navigation such that the front page appears in it.

Open the context menu for `index.html` in the root folder, choose **Change navigation**.

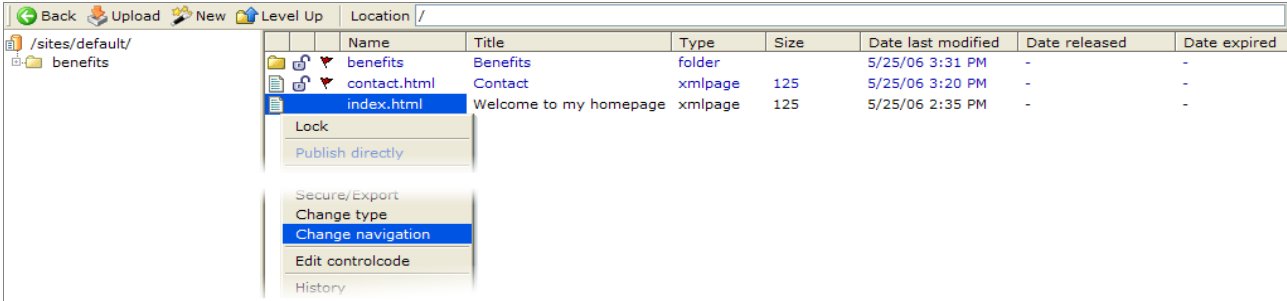


Illustration 29: There is a specific function for changing the navigation properties.

You will be presented with the **Change navigation**-dialog. Enter `Front page` in the **Navigation text**-field and choose `---` at the first position `---` from the choices in the **Insert after**-field. Click **OK** to finish. This change will place a link at the first position in the navigation menu.

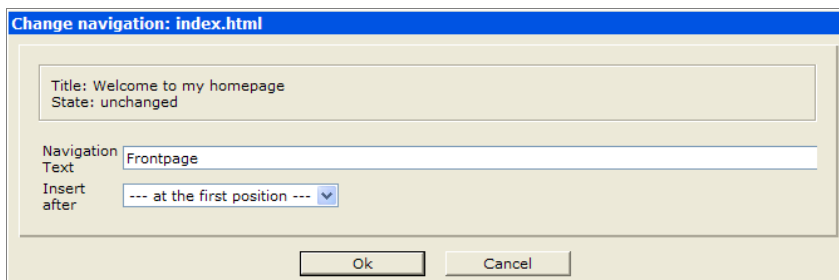


Illustration 30: Both the text and the position must be defined..

Another way of doing the same is by using the Properties function. This is easier if you have to change other properties as well. Here we would like to make sure that the contact entry appears after the entry to the benefits-section: Select **Properties** from the context menu for the `contact.html` file.

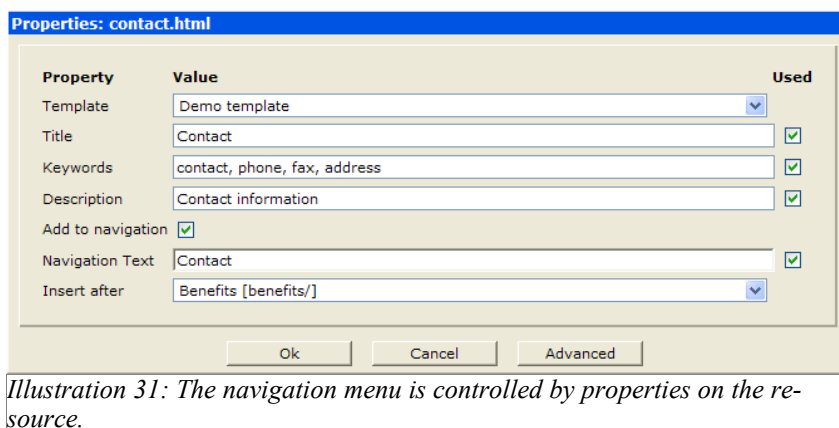


Illustration 31: The navigation menu is controlled by properties on the resource.

Choose `Benefits [benefits/]` from the list in the **Insert after**-field and click **OK**. This will place it after the Benefits entry.

Open the front page in your web browser (click on `index.html` in the **Name**-column, still in the Offline-project) to see the result of the changes.

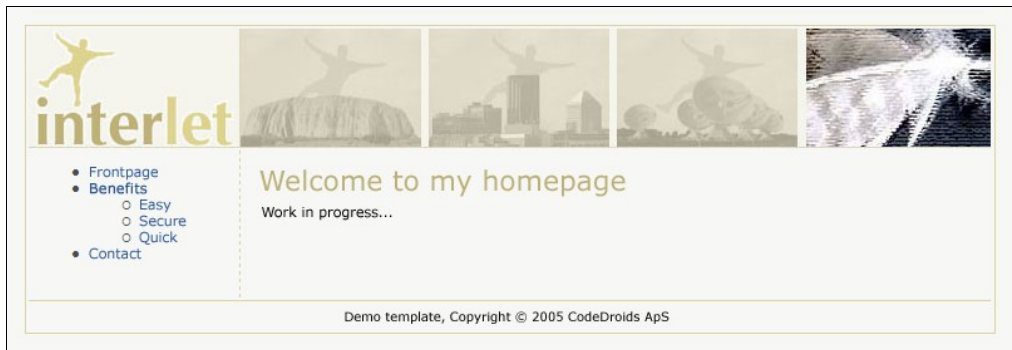


Illustration 32: All pages now reflect the changes made to the navigation – OpenCms handles this automatically.

Compare the result in Illustration 32 to that of Illustration 26 - OpenCms automatically updates the navigation on all pages on the web site.

Of course, the changes are only done to the Offline-project – looking at the page in the Online project should convince you that this stays unchanged. That is until you publish the changes.

## 2.8 Move/rename resource

To move or rename a resource is basically the same thing in OpenCms. E.g. the full path to the Easy-page in the `benefits`-folder is `/benefits/easy.html`. Moving it to say the root folder essentially renames it as well, as the full path now is `/easy.html`.

But we will keep the distinction by saying we move a file if we move it to a different folder. And we rename it if the file name is changed (whether or not the resulting file is the same or a new folder). And if you move it from one folder to another one while renaming it as well, you do both a move and a rename.

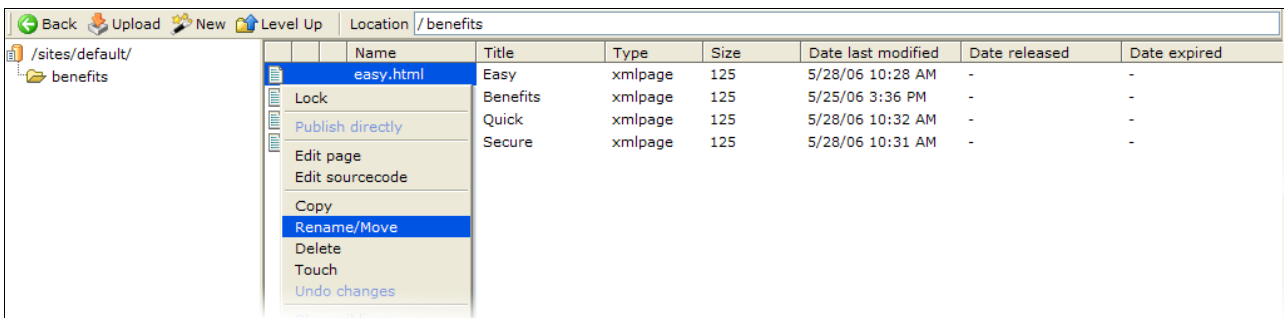


Illustration 33: To move or rename a resource is basically the same thing in OpenCms.

As an example go to the `benefits`-folder in the explorer, choose **Move/rename** from the context menu on the `easy.html`. Enter `/` (a single slash indicating the root folder) in the **Move to**-field and click **OK**.

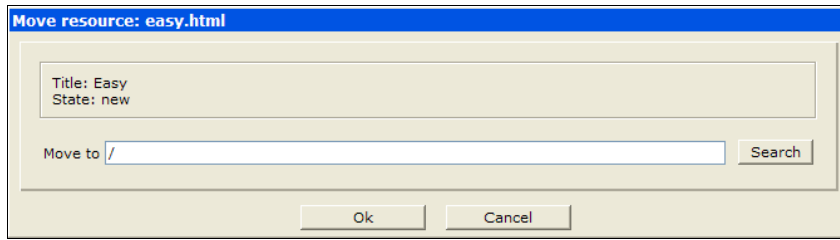


Illustration 34: Enter the path for the folder to which the resource should be moved to, or the new name for the resource. You can use the Search-button to locate the folder.

If you enter the name of a folder in the **Move to**-field then the resource is moved to that folder, but it keeps its name. If you enter a name of file, then the resource is moved to the folder under the new name. If you do not enter any path information but just a file name, then the resource is renamed.

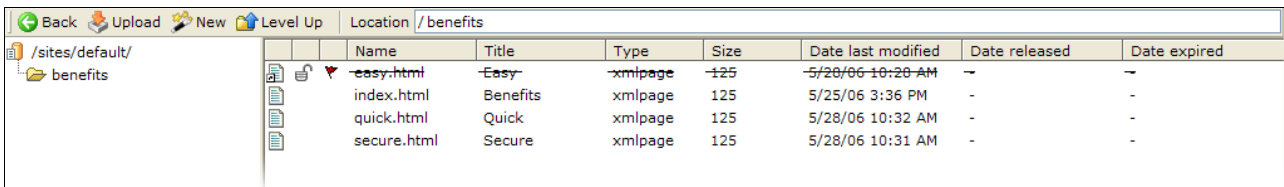


Illustration 35: A move or rename of a published resource is done by copying the resource to the new folder and/or name, followed by a delete of the original.

The contents of the `benefits`-folder is now as shown in Illustration 35. As `easy.html` has been published previously OpenCms marks it as being deleted rather than deleting it right away. This is marked by a strike through. This approach enables you to see that `easy.html` has been changed since it was last published (i.e. deleted). Next time you publish the resource it will be removed from the Online-project as well as being removed from the Offline-project.

Now go a level up to see the contents of the root folder:

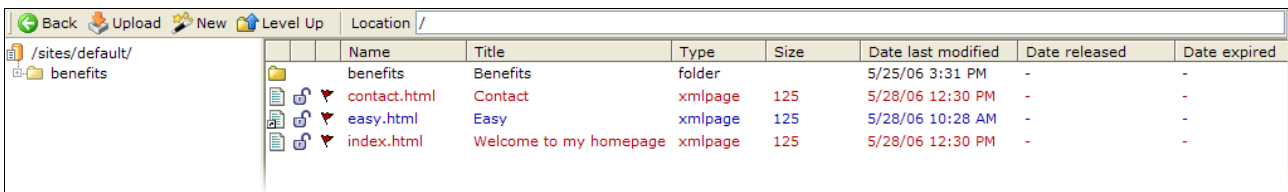
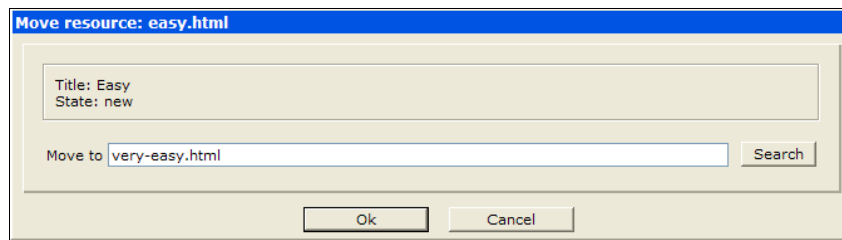


Illustration 36: The moved resource is marked as being new, since there is no corresponding resource in the Online project.

You can see that `easy.html` directly inside the root folder and it is marked as a new resource (blue) that yet has to be published.

After moving it we will now rename `easy.html` to `very-easy.html`. This could have been accomplished at the same time we did the move, by entering `/very-easy.html` in the **Move to**-field rather than the `/` (Illustration 34). But then we could not do the next example – of course you will normally do the renaming at the same to you do the move if that is what you need to do.

Go ahead and choose **Move/rename** from the context menu for `easy.html`. Enter `very-easy.html` in the **Move to**-field and click **OK**.



*Illustration 37: By entering just a name, the resource is renamed and stays in the same folder as it did before..*

The resource list now looks like in Illustration 38. Here `easy.html` is not shown as deleted (strike through). This is because it was a new resource that had not been published, hence it can be deleted right away (after having been copied into the new file).

Name	Title	Type	Size	Date last modified	Date released	Date expired
benefits	Benefits	folder		5/25/06 3:31 PM	-	-
contact.html	Contact	xmlpage	125	5/28/06 12:30 PM	-	-
index.html	Welcome to my homepage	xmlpage	125	5/28/06 12:30 PM	-	-
very-easy.html	Easy	xmlpage	125	5/28/06 10:28 AM	-	-

*Illustration 38: New resources can be renamed or moved without being marked as deleted first.*

Open one of the pages in the web browser and notice the changes. We have not stated anything about the position of the `very-easy.html` page in the navigation so you can consider its position as being chosen randomly

*It is not really random – not much inside computers are – but unless you are really interested in comparing numbers and the like it is really okay to assume that a moved page is positioned randomly in relation to the other pages in the same folder – and then just moved by changing the navigation as shown previously.*

Finally publish the project to push the changed into the Online-project.

Smooth sailing so far if you are the only one working on the site. In a true working environment though, with several users working on the homepage, you may run into files and folders to which you only have limited access. It is very likely that you can read a resource but you may not be allowed to delete. Then you are not be able to move the resource, since this implies deleting the original. You will have to consult the system administrator if you think there is a problem with the permissions you are given.

## 2.9 New sibling

Siblings in OpenCms are similar to the shortcuts you may be familiar with from your PC. It is a way to have more than one file name (including the full path) to point to the same contents – this way there is more than one way to the contents of say a page.

Usually you rarely need to use siblings, with the one exception: when you are working on a web site that is maintained in several languages.

On a multi-lingual homepage it is possible to use siblings to reflect that fact that even though a page is available in two languages, the contents really is the same. Siblings in OpenCms supports this point of view very well. Exactly how you will be using siblings in relation to multiple languages will depend on the specific setup chosen for your site, so we will not get into details here.

Since the sibling concept is not solely for dealing multiple languages but can be used for creating relations between pages across the natural hierarchy given by the folders. In an elaborate hierarchy of



sections one could imagine a scenario where the same page is useful in more than one section of the homepage, in that case it is possible to create siblings so the same contents is available in two (or more) positions in the hierarchy. Since our example does not have a elaborate hierarchy of sections on the homepage it is not the best way to demonstrate the idea, but the steps involved are the same as for a more appropriate homepage.

Open the context menu on `very-easy.html` and choose **Copy**. You can think of a sibling as a special kind of copy since a sibling has its own copy of all the properties and attributes of the file you copy – the only thing not copied is the actual contents which is shared with file you copy from.

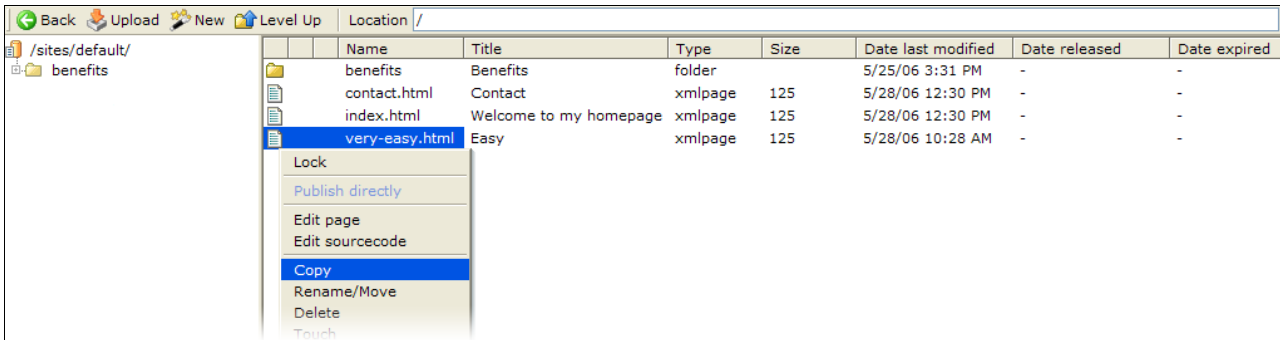


Illustration 39: Siblings are created by copying the properties and attributes of the file you copy from, but the contents of the file is not copied, it is shared.

Compared to the previous example of how to copy you have to choose **Create a sibling of the resource**. in the **Copy resource** dialog. Enter `/benefits/easy.html` and click **OK** (see Illustration 40).

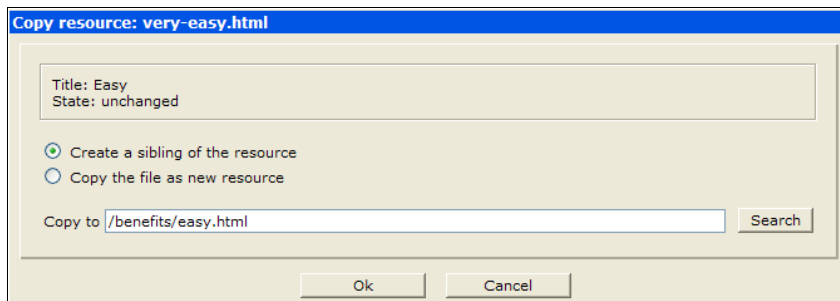


Illustration 40: To make a sibling select Create a sibling of the resource..

In the resource list you will notice that the document icon now is marked with a small arrow – and this applies to both the one you have copied from (`/very-easy.html`) and the one you just created (`/benefits/easy.html`) – see Illustration 41 & 42.

This signifies that both files are now siblings and there is no significance to be the "first born". If you delete one of them the other one will just continue to live on as a normal file, even if you delete the one that you may consider to be the "original".

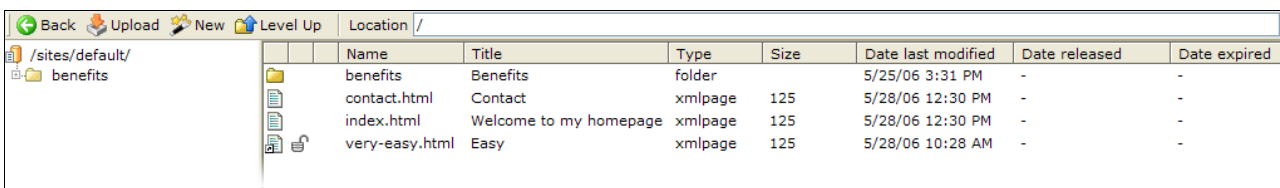


Illustration 41: Siblings are marked with a small arrow on the document icon.

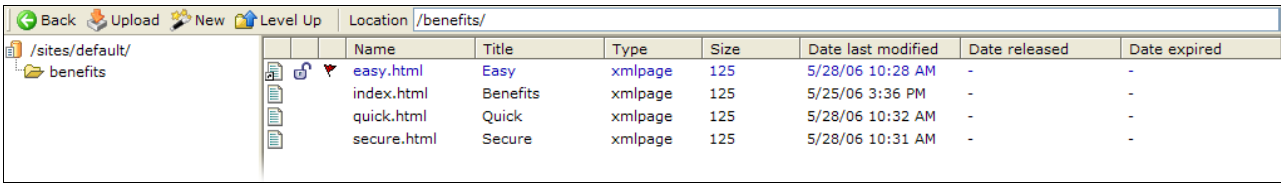


Illustration 42: A new sibling is marked as a new file as it has yet to be published – from this point of view the sibling is just like a copied file.

Illustration 43 shows how the navigation looks now. There are two Easy entries and they show the same contents (both empty for the moment). But they will be in two different places in the hierarchy.

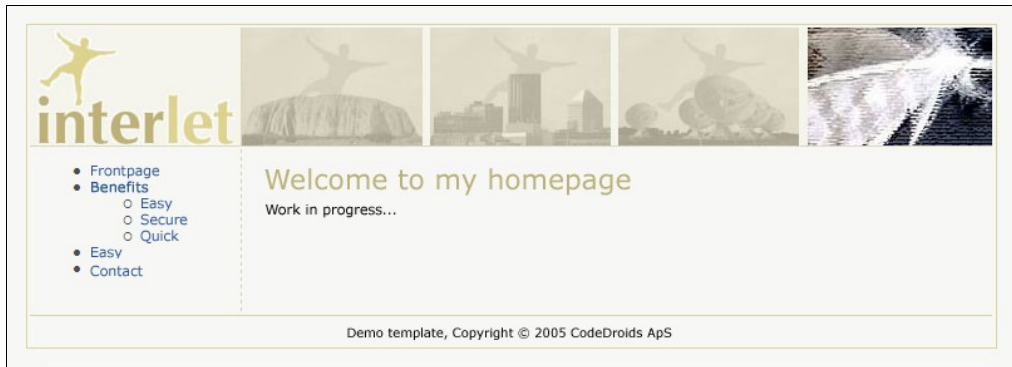


Illustration 43: The navigation now has entries leading to two pages with the same contents.

The example would allow you to place the same article in two different places on your homepage. If this is a good idea of course depends on your usage. If you just need to make a certain page buried deep down in the folder hierarchy more predominantly present by having a link in the top level menu, then OpenCms has other means to do that. As mentioned earlier another more useful example would be a homepage with multiple language – you would then have a top-level folder per language, and then create siblings for the pages in each of the language folders.

The important aspect of siblings are that while the content is shared among siblings, their properties are not. So you can give each sibling its own title, navigation text and so forth. So the title on the English front page would be "Welcome", on the German it would be "Willkommen" and the danish would be "Velkommen".

Here we will change the title and navigation text to prove the point. Choose **Properties** from the context menu on the /benefits/easy.html-file. Change the **Title** and **Navigation text** to Easy, again. Click **OK**.

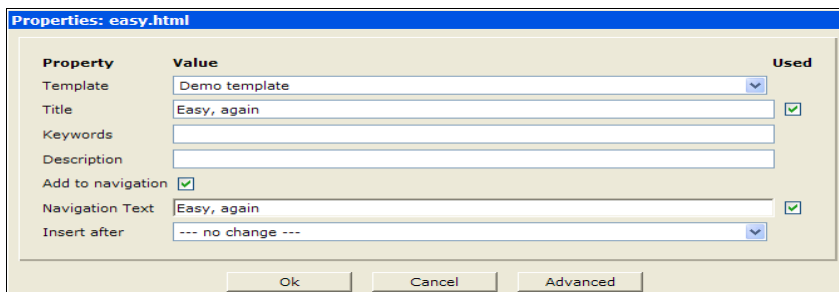


Illustration 44: Every sibling has its own set of properties which can be defined independently of other siblings.

Open a page in the browser and notice the change to the navigation (Illustration 45). Clicking on the Easy and the Easy again respectively will take to the pages as you expect and the window title gets

updated accordingly. So this works exactly as this was a plain file copy.



Illustration 45: Navigation and titles are different for the two pages, but their content is the same.

Both pages are empty since we have not edited them. So you must either take our word for it and believe that if you were to edit one of them, the changes in the content is reflected on the other page. Or you must jump to the next chapter and see how you edit the pages and see for yourself.

Here we have two siblings sharing the same contents, but you can make many more. If you open the context menu on a sibling there is a new item **Show siblings** – this will list all the siblings that share contents with the selected sibling.

The **Location** field indicates that your are in a special list mode by writing `siblings:` and then the name of select file – this way you know the resource list is not just showing the contents of the current folder.

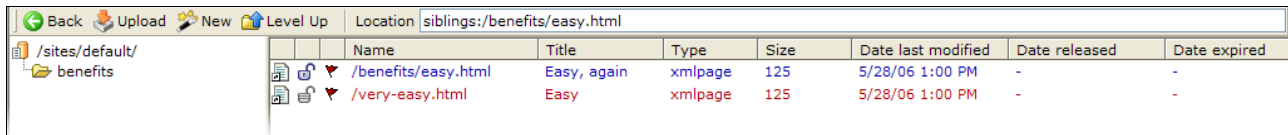


Illustration 46: Show siblings lists all siblings sharing the contents with the file shown in the Location field.



The resource list also shows the full path of the siblings in the **Name**-column rather than just the file name. This is necessary since the siblings may reside in different folders. Click on **Back** return to the normal resource listing.

*From a technical standpoint siblings in OpenCms are different from say shortcuts on your PC, but from a usage perspective they are much alike. There is one major difference though. Shortcuts on your PC are pointers to the original file which stores the actual content – if you delete the original file, your shortcuts are basically pointing to nowhere and the contents is lost. In OpenCms you may think of siblings in a similar way, but it is not entirely correct. The important difference is that there is no original, or rather – if you want to keep the terminology – all siblings are originals. There is the first file from which you can create a sibling, but once the sibling is create it is just as much an original as the first file – in fact you can delete the first file without loosing the contents of sibling. All siblings references the same contents and as long as at least one reference to the contents exists, then the contents is kept. Once you delete the last reference then the contents gets deleted.*

## 2.10 Delete resource

Deleting resources can be divided into two cases – one where you have new resource that has not

been published, and one where the resource has been published. In the latter case, OpenCms cannot really delete the resource until the next time it gets published.

You have already seen some of the aspects of deleting resources in chapter 2.8 Move/rename resource (p. 19). Moving a resource indirectly causes the original resource to be copied and subsequently to be deleted.

To delete a resource directly choose **Delete** from the context menu for the file or folder you want to delete. You will be prompted to acknowledge the deletion. Press **Cancel** if you want to keep the resource.

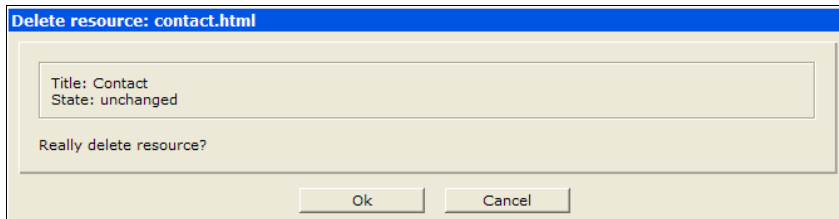


Illustration 47: To be on the safe side, OpenCms always prompt you to acknowledge the operation before deleting a resource.

If you click **OK**, the resource is either deleted right away or it is marked for deletion.

If the resource is new, it will be deleted right away, and it will disappear from the resource listing.

If the resource has been published (and thus is present in the Online project), the resource will be marked for deletion. This means that it is considered to be deleted in the offline project and no longer is included in the navigation menu if you test the homepage in the offline project.

However it is still present in the Online project and will stay there until the resource is published (which in this case means, delete it from the Online project). As previous shown in Illustration 35 this is marked by the explorer by striking through the resource name in the list. So until you publish the resource you do have a handle in the offline project and you can select it and you can undelete it if you regret the delete operation.

In relation to siblings there is an extra twist, lets try with an example. First make sure that everything in the example is published. Then select **Delete** from the context menu for the `/very-easy.html`-file:

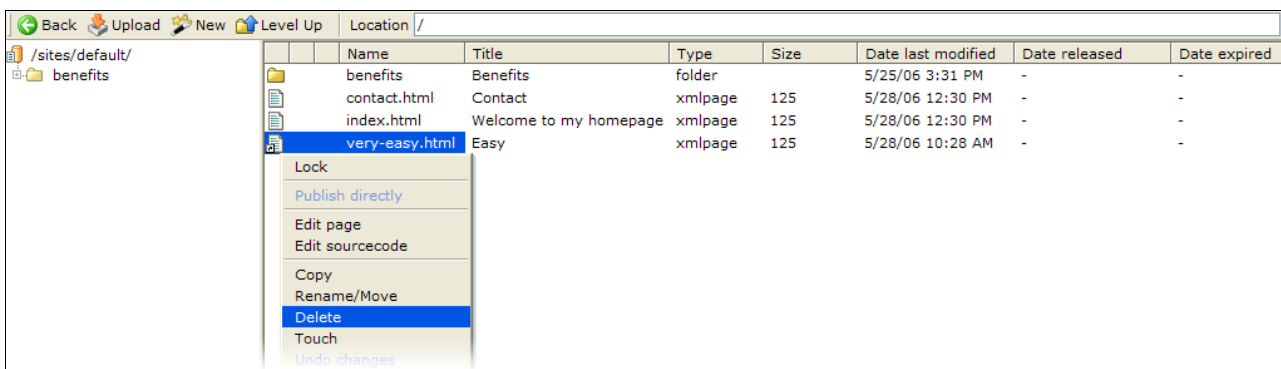


Illustration 48: Deleting resources follows different procedures depending on whether the resource is new or has been published. Deleting siblings opens for further options.

Since the file is a sibling the **Delete resource** dialog changes (compare Illustration 49 and Illustration 47):

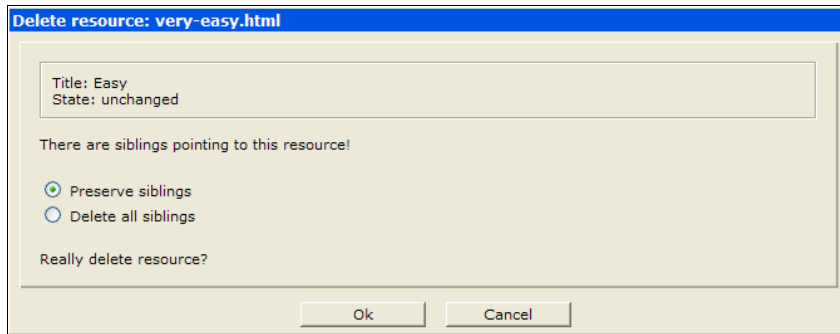


Illustration 49: When deleting a sibling you have the choice of delete just the selected one and keep other siblings, or delete all siblings sharing the same contents.

You can choose to **Preserve siblings**, in which case you only deletes the selected resource – other related siblings remain unchanged.

If you select **Delete all siblings**, then all related siblings gets deleted, i.e. all resources sharing the contents with the selected sibling will be deleted. If you are not sure which resources are related to the one selected, cancel the delete procedure and then use the **Show siblings**-function from the context menu.

In our example you should leave at the default choice – **Preserve siblings** – to delete just the selected file. Click **OK** to delete it.

Since `very-easy.html` has been published previously it is now marked for deletion (Illustration 50)

Looking in the `benefits` folder you see that the related sibling `easy.html` still exists – had you chosen to **Delete all siblings** in the previous step, it too, would have been marked for deletion.

Go ahead and publish the project by clicking on the **Publish project**-button (you should still be in the Offline-project). This will delete `very-easy.html` from the Online-project and remove the marked entry in the resource list in the Offline project.

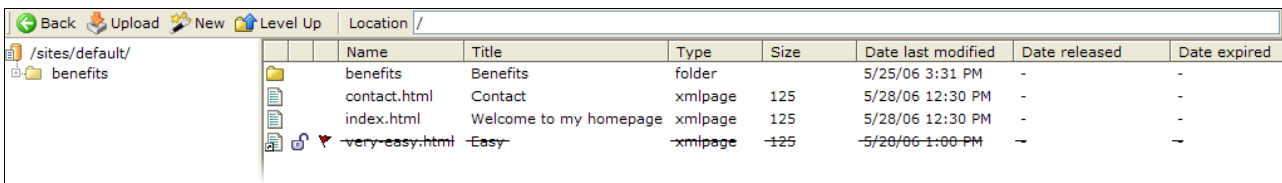


Illustration 50: An already published resource is marked as deleted when it is being deleted, but it is not actually deleted from the public web site (Online project) until it is published again..

Once the publishing has been performed you will notice that the sibling-marker (the small arrow) no longer is shown on the document icon for `/benefits/easy.html` (see Illustration 51). This indicates that there are no related siblings any more, so it appears a normal file.

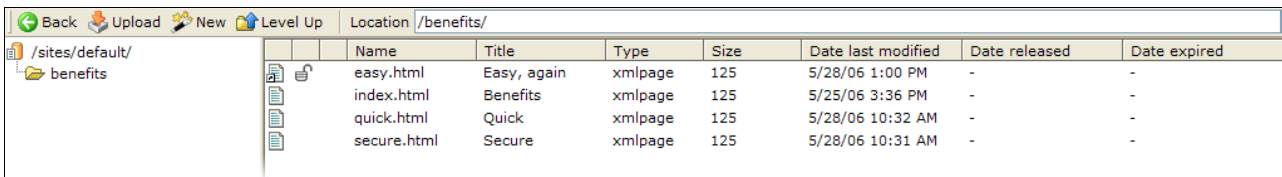


Illustration 51: A sibling is automatically 'turned into' a normal file when there are no other related siblings.

In the root-folder the `very-easy.html` file is now gone – both from the Online and Offline-projects.

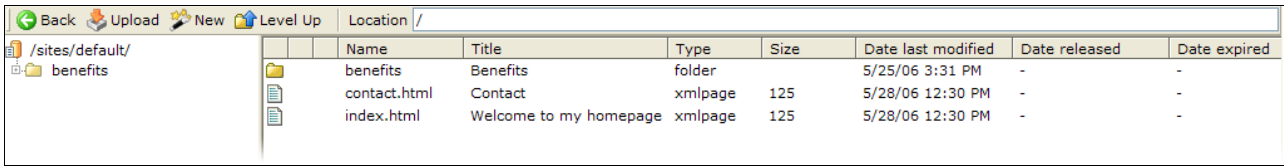


Illustration 52: Publishing a resource marked for deletion in an offline project will cause it to be delete from the On-line-project and the marker is removed from the offline project as well.

Opening a page in your browser should convince you that the entry is no longer available and the navigation menu is updated to reflect this fact.

## 2.11 Undo changes

If you are editing a page in the editor then you can choose to save the changes or not – this is explained in the next chapter. When the changes are saved, you still have an opportunity to undo the changes.

To do that you select the **Undo changes** function from the context menu. Note that the function is not active in the context menu if there are no changes to be undone.

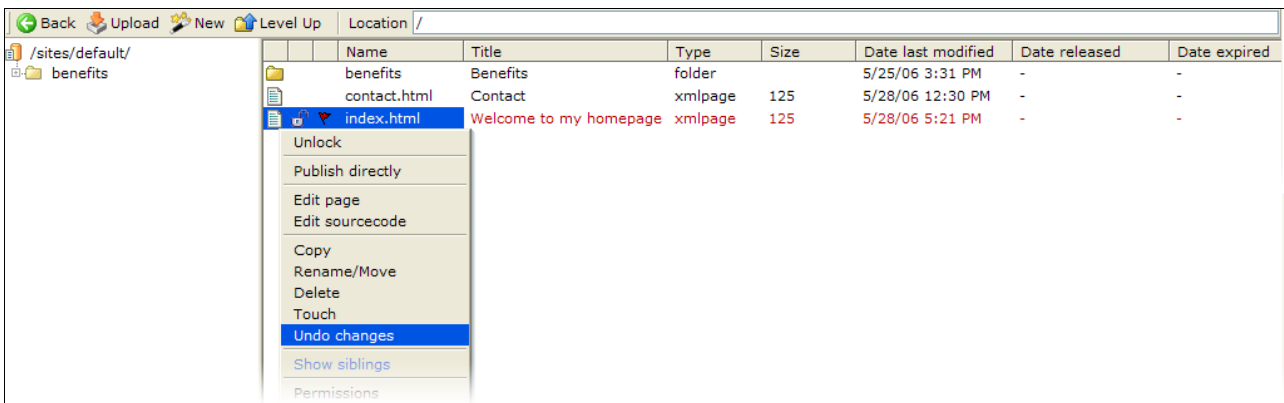


Illustration 53: The Undo changes function is only active for published files that have been changed since they were last published.

The function returns the file to the state it was in when it was last published.

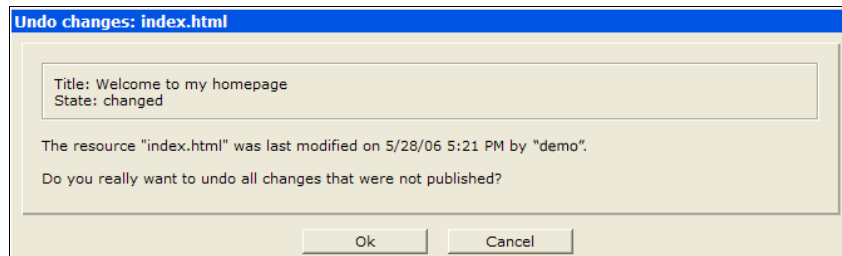


Illustration 54: Since all changes made to the file since it was last published will be lost OpenCms prompt you to acknowledge the operation.

You will be prompted to acknowledge that you want to undo all changes made to the file since it was last published. Once you click **OK** the changes are lost.

OpenCms provides a related **History** function. With this you can pick from a number of previously

published versions of the file. You are not limited to just the last published but can go further back in time (exactly how long back you can go is determined by the system setup for your particular OpenCms site).

Beside undoing mistakes, you can use function this to make some temporary changes to a page, and once the changes no longer are relevant, go back to the version prior to the last published version.

## 2.12 Upload

If you have files stored on your local PC that you need on the homepage, then you must use this function to upload the files to OpenCms. You need to upload say images to OpenCms before you can use them on the homepage. The files can be images and other type of files such as PDF's and so forth.

*Files must be uploaded to OpenCms because web users on the Internet – hopefully – does not have access to your local PC's hard disk. If you insert an image on a page by entering a reference to your local hard disk, then the page would look fine to you, but to all other web users the image would be missing on the page since they are not allowed to read from your hard disk.*

You can upload the files to any folder in OpenCms virtual file system, but for the most cases you should upload them to a gallery. OpenCms galleries are explained in chapter 4 Galleries, for now it suffices to say that a gallery is just a special kind of folder. And whether you upload to a gallery or somewhere else, the procedure is the same.



Before you upload you should go to the folder to which you want to upload the file(s) to. Then click the **Upload**-button.

OpenCms supports two different upload mechanisms, which one will be used when you click the **Upload** button depends on your personal preference settings. We explain both below.

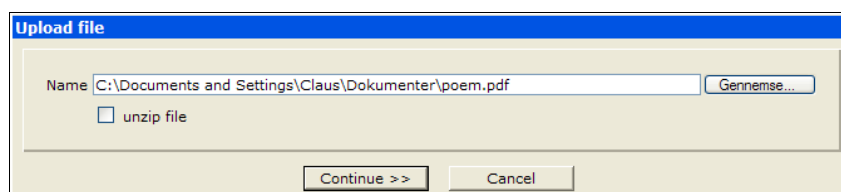
*If you want to upload a large amount of file, perhaps an entire web site, then OpenCms provides some additional administrative functions to facilitate that. These are available only to the system administrator and will not be discussed further in this guide.*

### HTML upload function

This function uses a method supported by all modern web browser. It allows you to select one file and upload it to the OpenCms virtual file system.

Uploading the file consist of three steps. First you must locate the appropriate file on your local PC. Then you indicate the type of the file. Finally to provide a file name and title under which it is to be stored in OpenCms.

The first is to select the file on your PC by using the file selector. After clicking the **Upload** button you are presented with the **Upload file** dialog.



*Illustration 55: Usually you use this function to transfer one file at the time. By making a ZIP-archive you can transfer several files in one operation.*

**Name** is the name (with full path) of the file on your local PC.

**Unzip file** if you have archived a number of files that should be stored as individual files in the OpenCms file system. The archive must be a ZIP-file. By packing up a number of say images in one ZIP archive, you can use this method to transfer them all in one operation.

If **Unzip file** is enabled OpenCms will unpack the archive before storing it in the currently selected folder in the virtual file system. In case the archive includes folders, they will be unpacked as well. This allows you to transfer an entire folder structure.

Click the **Browse...** button to open the file selector (this is provided by your operating system, you should already be familiar with how it works). Use it to locate the relevant file, click **Open** to select the file and return to the **Upload file** dialog. In the example we are uploading a PDF file – not an archive, so leave the **Unzip file** unchecked. Click **Continue >>** to start uploading the file.

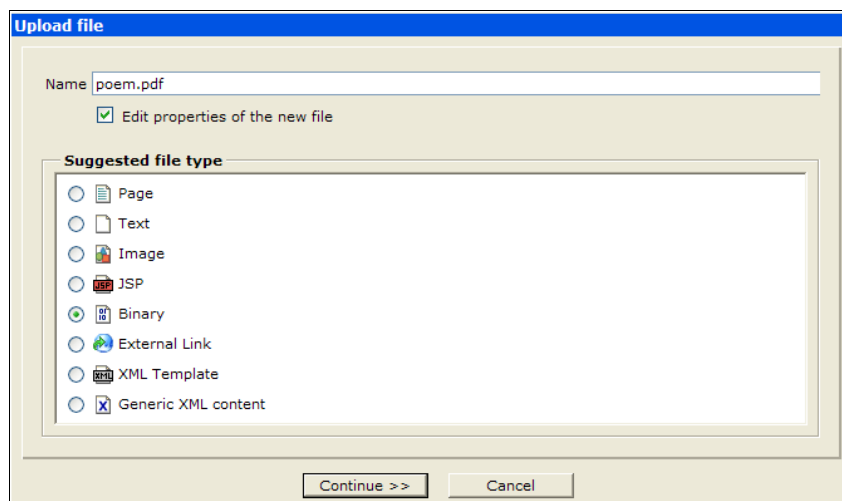
Depending on the size of the file and the network bandwidth this may take from few seconds to minutes.

If the **Unzip file** is checked then OpenCms will skip the next two steps and return to the explorer once the upload is finished. Otherwise it will present you with the next dialog as shown in Illustration 56.

You must provide a file name and a type for the file. These are information used when the uploaded file is stored in the virtual file system. OpenCms proposes a file name and type based on the information it has on the uploaded file. You can alter the values to fit the needs.

In the example we uploaded a PDF-file and this type of file is Binary. Most uploaded files that are not images should be stored as binary files.

The file name is deducted from the file name that the file has on you local PC. Should that name contain characters that are unsafe in relation to web browser, OpenCms automatically translate the problematic characters to safe characters. For this reason you may find that some characters has been replaced by x's (or whatever you site is setup to use as replacement). As an example would æblegrød.pdf be translated into the safe version xblegrxd.pdf.



*Illustration 56: OpenCms suggest a file name and a resource type.*

If you has chosen to unpack a ZIP archive OpenCms uses the same mechanism to find file names and resource types for the files that are stored in the virtual file system. Since you are not prompted during the upload when using the **Unzip file** function you will have to change these value by altering the type and name of the uploaded files afterward.

Click **Continue >>** to go to the last step.

If the **Edit properties of the new file** was checked in the previous dialog you will be prompted for the properties for uploaded file. You will notice that usually the only property used for binary files is the title. Different file types has different sets of properties.



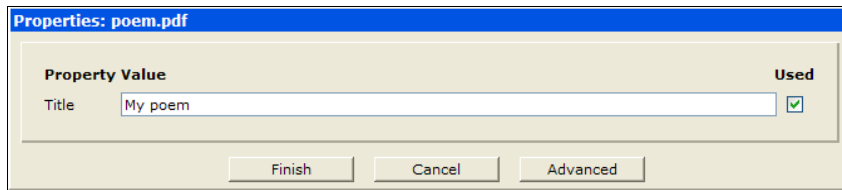


Illustration 57: You can enter a title for the uploaded file.

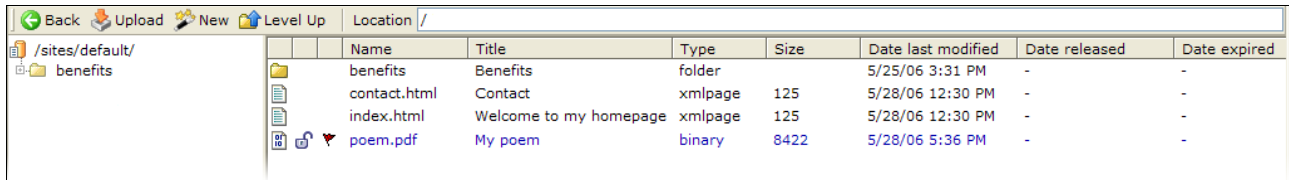


Illustration 58: After being uploaded the file is marked as a new file and is ready to be published..

Images and binary files can be replaced via the **Replace** function in the context menu. Name, type and properties remain unaltered when you replace such a file – you upload a new file that replaces the content of the file you have selected to replace. Since the type is not changed during this process you should make sure to upload a file of the same type (or manually change the type of it has been upload – use the Change type function from the context menu).

When you use the **Replace** function OpenCms will always use the HTML upload function since you are just replacing one file (and thus you don't need the more advanced multi-file upload feature in the Applet upload function).

## Applet upload function

This function uses Java Applet-technology which means that OpenCms will transfer a small program to your web browser.

The advantage is that the upload applet allows you to select several files for upload. You do not have to pack up the files in a ZIP archive, the upload applet will do that for you.

*The first time you run an applet you are asked to acknowledge that the applet may be run in your browser. This is a security feature in the Java Applet technology which requires you to permit applets that want to access your local hard disk. The applet is signed so you can trust that it has not been altered since released by the signer. You need to allow the applet to be run on your machine while you collect the needed files (the applet is stopped once the files have been uploaded).*

Click **Upload** – this will start the applet in your browser. Once started you will be presented to an screen similar to in Illustration 59.

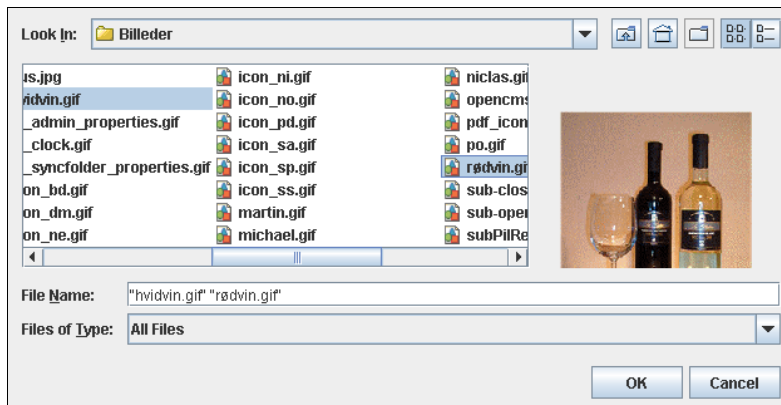


Illustration 59: The upload applet makes it easier to upload several files in one go.

In the example two images has been selected. Click **OK** to begin the upload. An animation indicates that the upload is in progress. It also shows the size of the upload (which is the combination of the sizes of all of the selected files) – see Illustration 60.

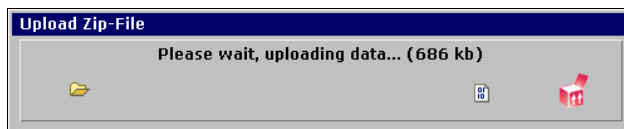


Illustration 60: While the upload is in progress this screen is shown – it shows the size of the data being transferred.

Since this upload method is similar to uploading a ZIP archive with the HTML upload function, it will apply the same methodologies when it comes to determining file names and file types. You can use the Rename/move and Change type from the context menu to changes either value for the uploaded files.

Illustration 61 shows the result, note that it has changed the names of the files to make them safe (replacing the space that was in the original file names).

OpenCms uses a similar technique to provide a meaningful title. Since the title is not restricted in the same way as to what characters are allowed, the title still includes the space as the original file name did.

		Name	Title	Type	Size	Date last modified	Date released	Date expired
/sites/default/		benefits	Benefits	folder		5/25/06 3:31 PM	-	-
benefits		contact.html	Contact	xmlpage	125	5/28/06 12:30 PM	-	-
hvidvin.gif		hvidvin	hvidvin	image	32771	5/28/06 5:48 PM	-	-
index.html		index.html	Welcome to my homepage	xmlpage	125	5/28/06 12:30 PM	-	-
rødvin.gif		rødvin	rødvin	image	12990	5/28/06 5:48 PM	-	-

Illustration 61: OpenCms makes sure that the names of uploaded files only contains "safe" characters.

## Maximum file size

For non-administrative users OpenCms operates with a maximum file size limit. This is a safety measure. If a file fails to upload you should contact the system administrator.

## Summary

This chapter shows how you with simple concepts as files and folders can build even very complex web sites.

Before starting on building a web site from scratch you should spend some time on structuring the site according the requirement and how you want to present your information to your visitors. Create outline diagrams to get an overview of the structure (similar to the diagram in Illustration 3).

## 3 Editing

---

In this chapter we will go through the tools you have to your disposal in OpenCms when it comes to editing the contents of the pages on your homepage.

There are different editors for the various types of resources. Most of the time you will be editing pages by means of the page editor. This is named a WYSIWYG-editor, what-you-see-is-what-you-get, i.e. fonts and images appear in the editor as they will on the web page. There is an alternative editor – the source code editor – which shows all the HTML codes. Rarely, if ever, will you need to use the source code editor, so we will not describe it further here.

*OpenCms supports a selection of page editors. Depending on the setup and your web browser OpenCms will choose one or the other page editor. Thus you may experience that the editor looks a bit different from the one described here.*

When you use the page editor to edit a web page you will notice that it very much resemble what you may be familiar with from your word processor. But there are few import areas where a web page is different from a piece of paper. Your pages will be viewed by web users that use different web browsers which not always agree upon how to render a given HTML page. The users have screens of varying sizes and color capabilities.

Luckily, with the most modern web browsers and when keeping a few things in mind when editing the pages, your readers are not likely to experience any serious problems.

### Web-browsers

Web users views your pages by means of a web browser. There is a number of different browser on the market. In the early days of the web the Netscape-browser was the most used, today it is the Internet Explorer browser which most people uses, with the open source Firefox browser as a solid number two. The important thing is that approximately ¼ of all the web users does not use the most used browser, and that by adhering to standards, these users can still read your pages without problems. This is especially important in relation to users which use special tools to read the page, such as blind web users that uses a screen reader to help them.

The problem with the various browser at that the same page may look different when viewed in different browser. For pages that adheres to the HTML standard the problems are minimal, and the page editors do generate reasonably standardized code.

So once the templates are correctly constructed, the daily work with writing and editing pages with the page editor is not going to present a lot problems.

### HTML pages

There are a few things that one would do when using a word processor which does not work in relation to an HTML page. Using the space key and the tab key to do indention will not work as expected. The HTML standard defines that a sequence of spaces must be treated like a single space. Different browser may interpret it differently but try to use the indention functions or use a table instead if you need column-wise layout.

Image is another thing to be mindful of. In particular one have to pay intention to their size (in terms of how many bytes they take up) and their dimensions. The latter has to do with the actual layout chosen for the web site – the layout may be such that images should not wider than a certain amount of pixels.

### Styles

One of the things that makes a word processor more productive is that one can define a style for say the headline, and reuse this style for all headers. When editing it is easier to just select a given style rather than have to e.g. select a font, a size and a color. Furthermore, a predefined style can be changed and the changes will apply to all the places where the style is used. If no style had been used one would have to go the document manually updating each headline and what have you. A slow and

error-prone process.

Exactly the same issues apply to a web site. Even more so, as you often have many pages on a web site. And the amount of pages is likely to grow over time, which eventually makes it impractical to manage if one is not using templates and styles. To add to that argument, it is even more likely that you want to change the look of the pages as they typically stay online for a long time and you may feel a need after a couple of years to freshen up the look of you web site.

Layout and styles are defined through the use of templates in OpenCms. Since these are very specific to a web site, you should consult the documentation for your site to see what templates are available and when to use which one.

## 3.1 Page editor

You open the page editor by selecting **Edit page** from the context menu on the page you want to edit. Note that you cannot edit a page which another user has locked. If you open the context menu on types other than the xmlpage type there may be a different editor available for it (and some file types have no associated editor).

*Note that when you open a page for editing, OpenCms will automatically create a working copy of the file. This file is marked with a tilde (~) and stored along side the original file. E.g. if the `index.html` file is being edited then the working copy will be named `~index.html`. Until you explicitly saves your changes, all changes takes place in the working copy. Usually you need not worry about the working copies, but you may notice them if there are several people working on your web site at the same time – when navigating in the explorer you may see the tilde -marked files and they then indicate the some other user is working on that file.*

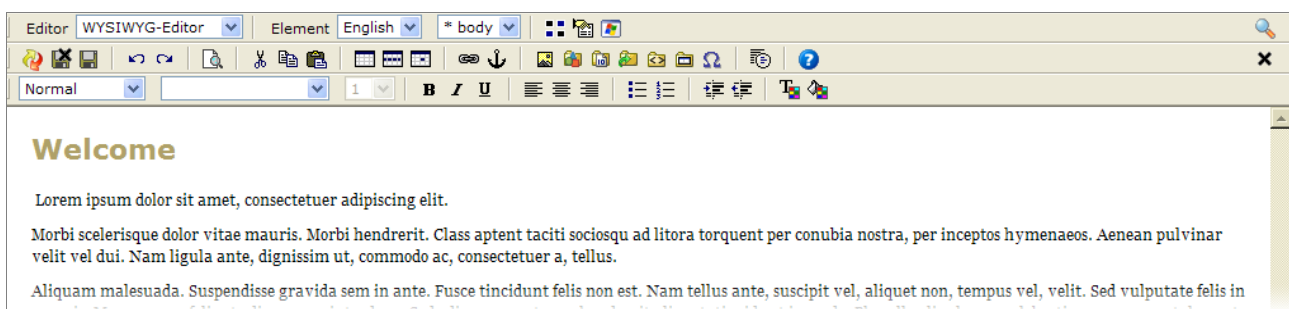
When you open a page in the page editor, the editor will show the part of the page that is considered the contents. It will not show those elements that is put on the page by the template. I.e. you will not see the navigation nor the banner or footer.



This makes it easier to focus on the actual contents, when the parts of the layout which is controlled by the template is not shown during the editing process. From within the editor you can always request a preview showing the contents you are editing by clicking on the **Preview**-button.

*The following illustrations uses the Demo-template, if you use a different template you screen will most likely look a bit different from the examples shown here.*

Illustration 62 shows an example of how the page editor looks.



*Illustration 62: The page editor is a WYSIWYG editor that allows you to edit web pages without the need to be an HTML expert.*

The top part of the screen holds a number of rows of buttons. These represent the various functions available to you. Some of the functions are accessible through keyboard short cuts as well.



When you a page it is important to remember that the changes you make remain confined your web browser on you local PC, until you explicitly saves the content back to the server. Use the **Save** or **Save and exit**-buttons to save your changes – the latter exits the editor after saving, returning you to the explorer view.

If you PC or web browser crashed the unsaved changes are lost. This also happens if you close the window with the editor – i.e. by clicking the close button in the window frame.

The top-most row of tools are for functions that work on the entire page (file) – this includes functions to select language and sub-element.

Illustration 63 show an overview over all the functions. Note that some of them may not be shown on you screen – this depends on the exact set up of your system.

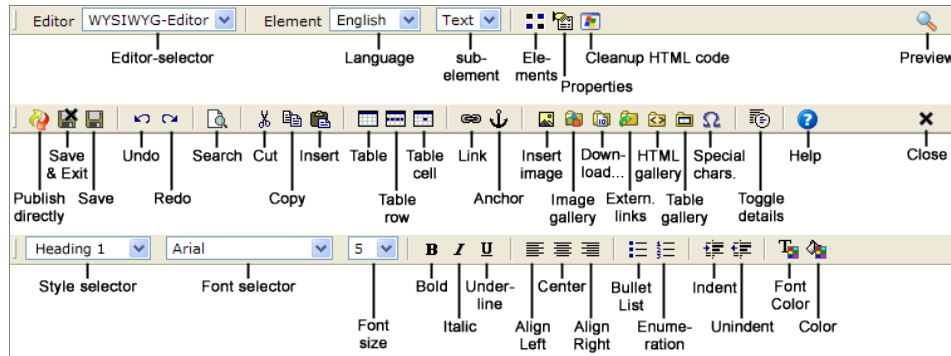


Illustration 63: Overview of the functions available in the page editor.



The middle row holds various functions to save, cut and paste, and to insert and access various elements such as tables and pictures. There is also a **Help**-button which will activate the online help.

The last row includes tools to control the styles and formatting of the contents.

## 3.2 Text editing

As stated in the beginning of this chapter there are a few items to keep in mind when editing a web pages. But for the most part editing is just like you know from your word processor.



So we assume that you are familiar with basic editing functions such as cut, paste, search and so forth. The page editor also has an **Undo** and **Redo**-function.

### Style selection

As mention earlier this is one of the areas where it is a very good idea to do it right the first time. I.e. use the standard styles whenever possible. This will save you a lot of work in the long run.

As a starting point you should always use the standard styles listed in the **Style**-selector. Only use the **Font** and **Font size** selector in very special cases. Once you start specifying the font and the size (as well as colors) specifically the style for that effected text is not longer controlled by the sites wide style guide.

*On a related note. If you use the standard style `Headline 1` this indicates to search engines like Google that this is the headline. As a consequence they may give the words in the headline a higher priority. This may ultimately lead to your page being ranked higher (listed before) another page with the same headline text, but where "headline" is just a paragraph with the font and font size set so it visually looks like a headline.*

The Style-selector list the following styles (the list may be different in your setup, but we have listed the most important ones). Also the description given here is only a guideline, your should have a definition for the styles and their meaning which is particular for your site.

<i>Style</i>	<i>Description</i>
Heading 1	Large sized headline, typically bold as well.

<i>Style</i>	<i>Description</i>
Heading 2	Sub-heading, smaller size, typically bold.
Heading 3	Could be used for small heading.
Heading 4	Could be used for trumpet.
Heading 5	Could be used for byline.
Heading 6	Could be used for image caption.
Normal	Body text.
Formatted	This is typically a fixed width font, making it suitable for code listings or columns of numbers.
Numbered list	List of items numbered with numbers or letters (ordered list)
Bullet list	List of items marked by various bullets (unordered list)
Defined word	Word to be defined (typically shown in bold)
Definition	The description/explanation for the word, typically shown with the normal style, but indented so it stands to the right of the defined word.

*Note that if you are using a non-English version of Windows the styles may be labeled differently, in accordance with your language setting. But it should be fairly obvious which is which anyway.*

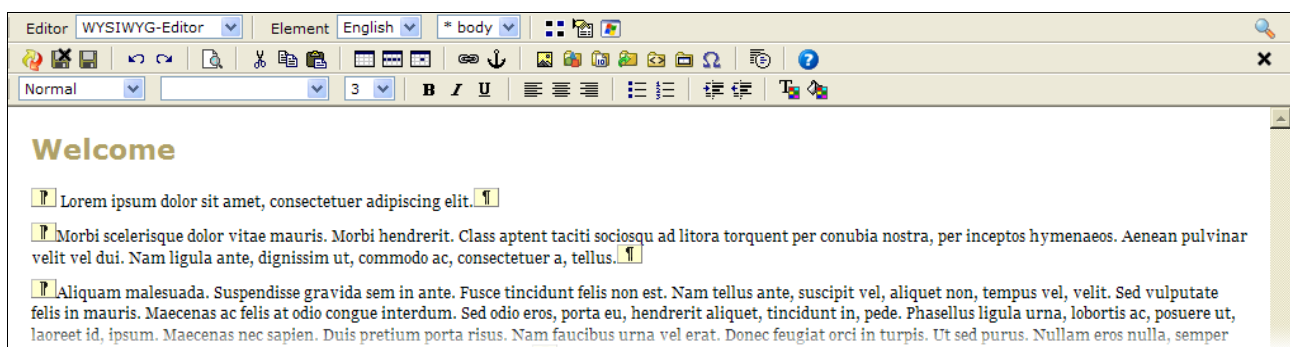
The demo template we use in the examples defines the various styles. E.g. the Heading 1 is large, bold and blue.

Open the `index.html`-page in the root-folder by selecting the page editor from the context menu. You will then be presented with a blank page. Choose `Heading 1` from the **Style**-selector. Place the text marker in the text area and enter the text for the headline, i.e. `Welcome`. You should see that the headline appears in a large, bold, blue style (Are you using a different template the look is probably different).

When you press the **Return**-key a new paragraph will be started, and the text you enter uses the `Normal` style as it is defined in the template.

Note that pressing **Return** starts a new paragraph, it is not just a line shift. Typically styles are such that there is automatically inserted some space between paragraphs to make it easy to read the text. If you do not want to start a new paragraph, but just want a line shift, press **Shift + Return** on the keyboard (simultaneously). This inserts a line break but does not start a new paragraph.

When you select a style it will effect the entire paragraph in which the text cursor is placed.



*Illustration 64: Editing may be easier in some cases when the markers are shown.*

A useful feature when working with the text is the **Toggle details**-button. It toggles between showing



and hiding various marks in the text. Illustration 64 shows how the paragraphs are marked, and in the last line there is a line break mark as well.

### *Bold, Italic and Underline*

**B***I*U

Select some text in the editor and click on the wanted style. You can combine one or more of the styles. Again, only use these if the Style-selector does not hold an appropriate style. Furthermore, be careful with the underlining text – usually underlined text on a web page is associated with the hyper link function. Users will therefor assume that they can click on text which is underlined in order to jump to a new page. It is better to use bold or italic to emphasize some text.

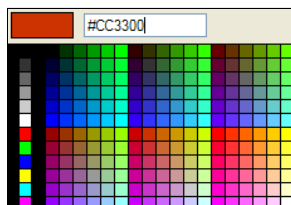
Keep in mind that as much as possible should be controlled by means of the styles in the template. So if you feel that you need to make a heading bold, then it is better to update the style in the template rather than to keep on manually applying bold to the heading.

### *Colors*



The **Font Color** and **Color**-buttons enables you to set the color on the text and the background respectively. Select the text you want to alter and then one of the functions.

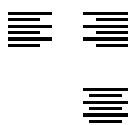
You can now select one for the colors from the color selector. When you click on a color it will be shown in the top and the HTML color code will be listed in the field. Click **OK** to set the color on the text (or the background).



*Illustration 65: Click on a color swatch to select it.*

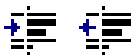
Be careful when using colors. For reason already mentioned (cannot be overruled by the global styles) and secondly some color combinations can cause trouble for people with certain disabilities.

### *Alignment*



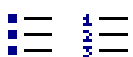
You can left-align, right-align and center text and other elements with the **Align left-**, **Align right-** and **Center**-buttons. The effect takes place on the paragraph or element in relation to its outer bounds. This is typically the page, but if you inside a table it would in relation to the table cell.

### *Indentation*



As mention earlier you cannot use spaces nor the tab-key to make indentation. Instead use these to functions. **Indent** and **Unindent** insert and removes space to the left of the selection.

### *Lists*



The buttons **Bullet list** and **Enumeration** has the same function as **Bullet list** and **Numbered list** in the **Style**-selector. Both are used to make lists, unordered with bullets or ordered with numbers and letters

## **3.3 Paste from other programs**

You can cut from other programs such as you word processor and paste it into the page editor.



Unfortunately not all programs are well suited for this. Some programs incl. Microsoft Word does not only copy the text but they include a lot for formatting codes as well. This is likely to cause problems as the final page will not look the other pages on the site. This is because the extra formatting codes overrides the global styles set in the template.

Other programs does behave a lot better in this respect, one such example is the free OpenOffice. Microsoft WordPad and NotePad also works better in this respect. And it is actually possible to copy the contents from a Word document and paste it into either of the mentioned alternative and then select the text from that program and then paste it into the page edit. This typically filters out the unwanted formatting codes.



There is also a build in function to do something similar. Once you have pasted the contents into the page editor you can invoke the **Clean up HTML-coder** function. This will remove those code that can be identified as superfluous. Unfortunately not all the unwanted codes can be identified as superfluous – these will not be removed.



If the inserted contents still looks wrong you can try click on the **Toggle details**-button. You may then be able to remove the superfluous code manually so that only well-known codes like paragraphs and line breaks are visible as in Illustration 64.

The more complicated the layout you attempt to copy is the more likely it is that you will have some problems. Images cannot be copied by cut and paste. See more about images in later on.

### 3.4 Tables

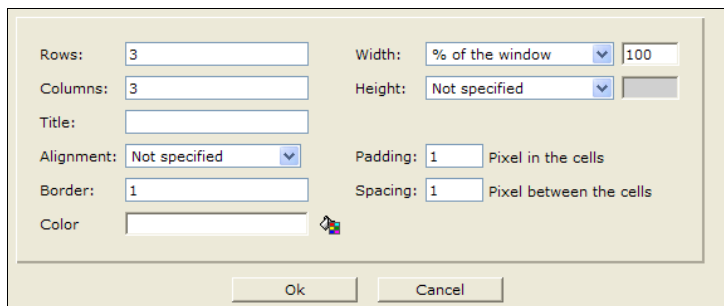
Tables are primarily intended for content which is tabular in nature, i.e. consist of rows and columns.

Tables can also be used to help out when formatting the content on the page, i.e. if you want to place a caption below an image. This is not exactly what tables were intended for when HTML originally was invented. So if you have other means (maybe some specific examples in the HTML gallery provided in you specific setup) then use them instead of tables.

#### Create table



You create a table with the **Table**-button. It will pop up a new window (Illustration 66), where you can define the table. When you click on **OK** the table will be inserted at the text cursor in the text.



*Illustration 66: You specify among other things the number of rows and columns.*

#### Rows and Columns

This defines the initial number of rows and columns for the table. The number of columns times the number of rows defines how many cells the table will have. You can later add and delete rows and columns.

#### Width and Height

Either can be either `Not specified` (which usually translates to 100%, but could be set differently

by the styles in the template), % of the window or rather of the surrounding element – which may be only a sub-section of the window, Pixel which defines a fixed width.

### *Title*

The title is set in the HTML codes. It will not be directly visible, but may be of use for blind people using a screen reader.

### *Alignment*

Defines whether the content of all table cells must be left or right-aligned, or centered. You can subsequently control the alignment per cell.

### *Border*

The value determines if and how thick a border is set on the table and the cells. The size is given in pixels. The value 0 (zero) means that there will not be a border.

### *Color*

Defines the background color for the entire table. You can set the background color of the individual cells, see below.

### *Padding and Spacing*

Padding determines how much space is placed along the inside border of the cell (between the cell border and the contents of the cell). The spacing determines how much space is placed between the cells in the table. Both values are given in pixels.

## Edit table

After creation you can enter text into a table cell by placing the text cursor in the cell. You can use the arrow keys to jump between the cells.

You can place images and even other tables inside the cells. This way you can make even very complex layouts.

If you right click inside a cell you will be presented with a context menu with functions to alter the layout of the table. You can add and delete rows and cells – just note that you should try to make sure all rows holds the same number cells as the table otherwise may not display correctly in all browsers.

If you need to have a rows with a different number of cells you should use the **Splits cell** and **Merge cells** functions from the context menu to achieve the goal.

1. row	two	three
2. row	two	three
3. row	two	three

If you have a table with 3 rows and 3 columns and you want to split the cell in the 2. row and 1. column, then you will end up with a table with 4 columns in one row and 3 in the other two rows. When you use the split function, what really happens is that the first cell in 1. and 3. row gets marked to indicate that they each span two columns. This way the layout actually has 4 cells in all rows and that will display correctly in all browsers:

1. row	two	three	
2. row, 1. part	2. row, 2. part	two	three
3. row	two	three	

Likewise if you want to do the opposite and merge to cells. To do so select the text in the two cells (if there is no text you must add some – a letter in both cells will do). Once selected right click on the selected text and select **Merge cells**:

1. row	two	three
2. row + two	three	
3. row	two	three



Use **Table**-button to inspect an existing table and to change some of the values related to it. Note some of the values are "locked" once the table is created.

Illustration 67: After the table is created you can alter the border and the like, along with the background color.

To select the table you can click on the border (you will notice that the mouse cursor changes when it is over the border of the table). In case the table is defined without any border, it can be tricky to select it with the mouse. Instead you can place the text cursor in one of the cells and press Shift + Tab to select it, if you have more than one table you may have to press the key-combination repeatedly until the table is selected.

When the table is selected this is indicated by small square handles along the edges of the table (note that if the width of the table is 100% you may not be able to the handles along the sides of the table):

1. row	two	three
2. row + two	three	
3. row	two	three

Illustration 68: The small square handles indicates that the table is selected.

You can use the handles (shown in Illustration 68) to change the size of the table. Note that as soon as you start dragging them the width is set in pixels on the table. If it was originally set to a percentage (thus relative) this will be changed to an absolute size in pixels.

### Table row



You can control the appearance of the individual cells or all cells in a row. To work with a row, place the marker in a cell in the wanted row and then click on **Table row**.

This will open a small window where you can specify Height and Width for the row. You can control how the content of the cells should be aligned – see below for an explanation. Finally you can control the background color. See Illustration 69.

### Table cell



To work with a cell, place the marker in the cell and then click on Table **cell**. This opens a small window as shown in Illustration 69.

**Height** and **Width** must be given in pixels. Note that the browser may decide to overrule the value you give here if it somehow conflicts with some other value set on the row, the table or the elements surrounding the table.

**Background color** and **Border color** is chosen with the color selector (or you can enter the HTML color code directly if you prefer). The border color is not related to the border set on the table – the color relates to the border of the cell. The exact effect depends on the styles set by the template.

*Illustration 69: You can set the attributes of a cell per cell or for all cell in a row.*

**Horizontal alignment** can be: Not specified, Left, Center, Right. The setting controls the horizontal alignment of the contents of the cell.

**Vertical alignment** can be: Not specified, Top, Middle, Bottom, Baseline. The setting controls the vertical alignment of the contents of the cell.

## 3.5 Images

Before you uses an image for a web page you should make sure that it is optimized for web use. It is outside the scope of this guide to cover that, but you want to make sure that it has the right dimensions and resolution as well as being compressed such that it loads fast when the end user views it.

Specifically you should not that while you can alter the dimensions of an image when place it on a page, only effects how it is display, it does not change that dimension nor the size of the image, and it therefor takes just as long to load in the end users browser. Also if you resize the image in the editor it is left to the browser to scale the image, which may result in a less than perfect image quality. So only use the editors resize function for minor adjustments if at all.

When working with images you will be using image galleries. Image galleries has a lot of advantages, one of which is that they make sure if the same image is used on more than one page, then the web browser will be able know that it is the same image and only download it once. This also improves the user experience since the page loads faster since the browser wont spend time downloading the same image twice.

### Insert an image from a gallery

Chapter 4 Galleries shows you how to create an image gallery. Here we will assume that you already have an existing image gallery and look at how to use this with the page editor.

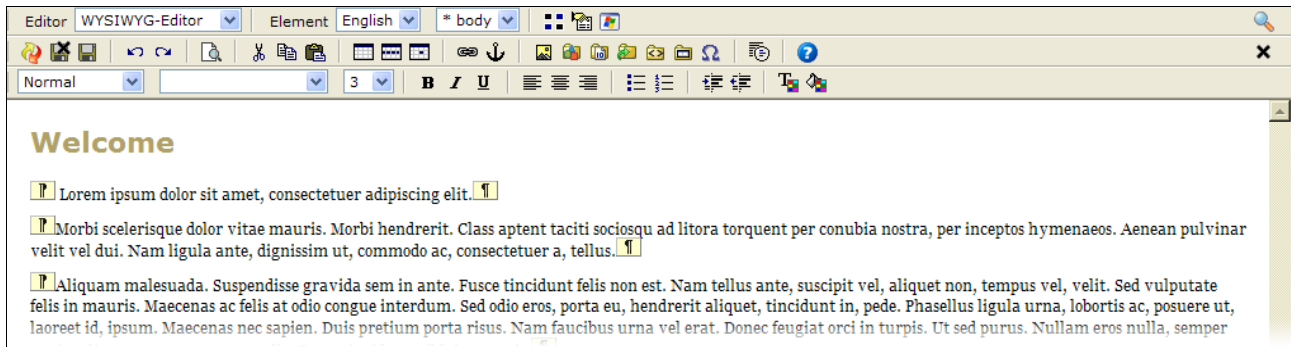


Illustration 70: Showing the details (markers) can make it easier to place images correctly on the page

As the first example we will insert an image in its own paragraph. In the example in Illustration 70 the **Toggle details** is enabled to make it easier to place the image. Start out by selecting all the text inside the second paragraph and delete it – now you're left with an empty paragraph – move the text cursor inside the empty paragraph.



Click on the **Image gallery**-button (not to be confused with the **Insert image**-button which we will come to later). OpenCms now opens the Image gallery window.

*If nothing seem to happen it may be because the window is placed behind the main window – this may happen with certain browsers if you do not close the gallery window after you have used it.*

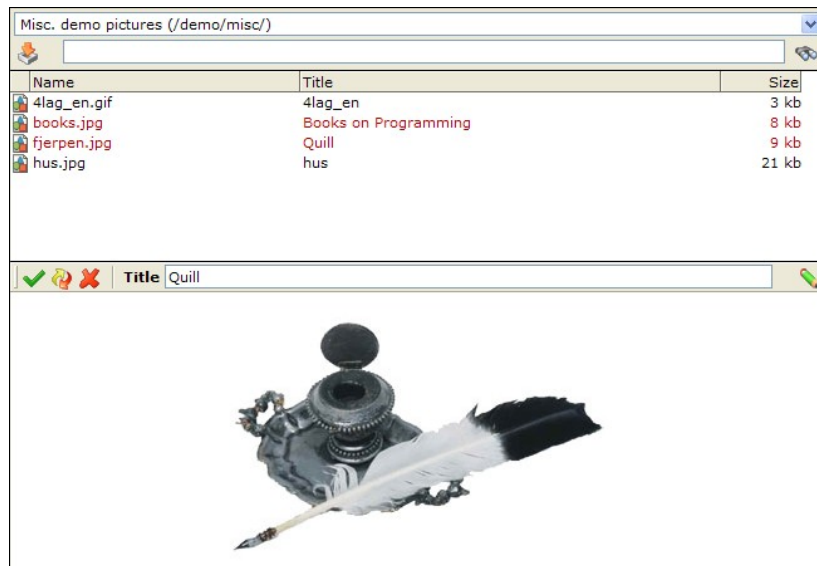


Illustration 71: The image galleries makes it easy to find and use available images.

The gallery selector at the top of the gallery window allows you to switch between the various galleries you have access to. Here we have chosen the gallery we created as the `misc` gallery folder.

The list shows the images in the gallery by listing the titles and filenames. Click on the wanted image in the list to show it in the lower part of the gallery window.



There are two ways to insert the selected image on the page. If you use the **Insert**-button then the image is placed where the text cursor is placed in text. After image has been inserted the gallery window is automatically closed.

It is also possible to drag the selected image from the gallery window to the position on the page

where it should appear.

### *Image in separate paragraph*

You should already have the text cursor placed inside the empty paragraph, so all you have to do is click on the **Insert**-button in the gallery window. This should place it as shown in Illustration 72.

If for some reason your text cursor was not placed inside the empty paragraph, the image will end up somewhere else on the page. Not to worry, you can drag the image from one place on the page to another. Click on it and hold down the mouse button while moving the image – aim the mouse cursor between the to paragraph-markers for the empty paragraph and let go of the mouse button.

The inserted image is selected which is indicated by the small squares along the border of the image. You can use the handles to resize the image, but as stated in the beginning of this chapter, then this should only be used for small adjustments.

☰ Since we now have the image sitting in its own paragraph, so it can be manipulated as usual. You could click on **Center** to center the image on the page.

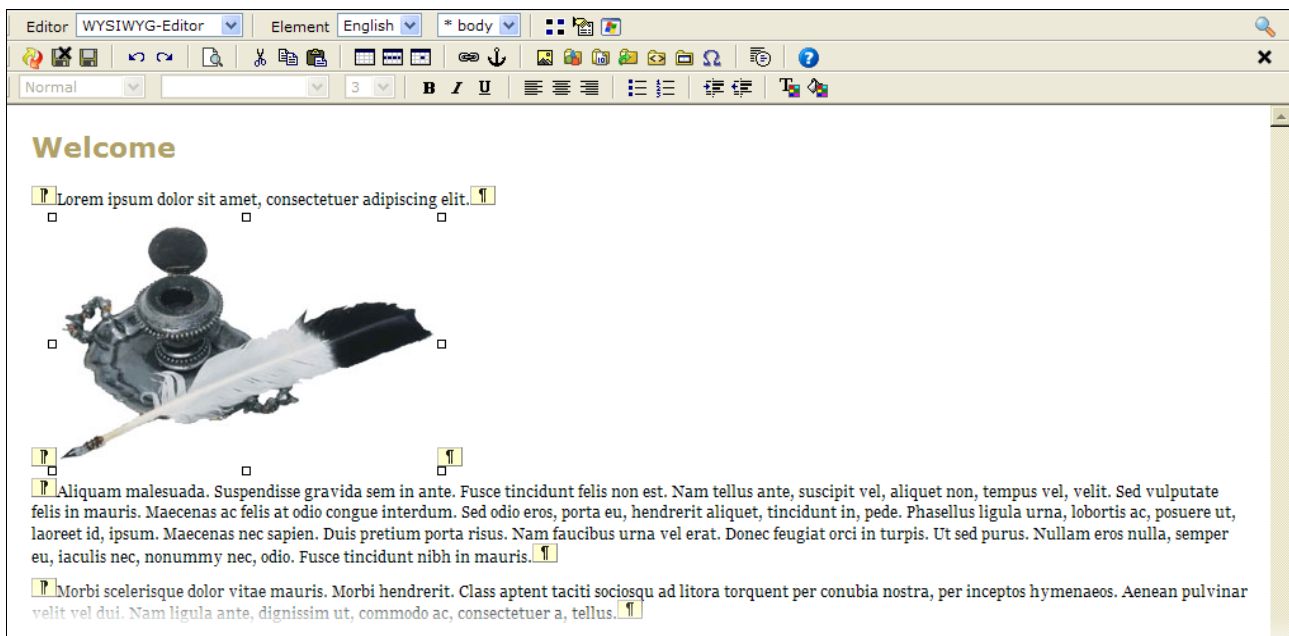


Illustration 72: The selected image is marked by small handles.

### *Image inside text flow*

Another way to place images is to place them such that the text flows either to the left or to the right of the image. The procedure is much like before, only now we place the image inside a paragraph that contains some text.

☰ We will start by deleting the image we just put on the page. Click on one of the paragraph markers for the paragraph holding the image. You will notice that the image is highlighted instead of being shown as selected (by means of the small handles). This is because more than just the image is selected as the paragraph is selected as well. Click on the **Cut**-button to delete the entire paragraph including the image.

Use the image gallery to select a new image. This time drag the selected image to the first paragraph such that it is placed between the first paragraph marker and the first letter inside the paragraph.

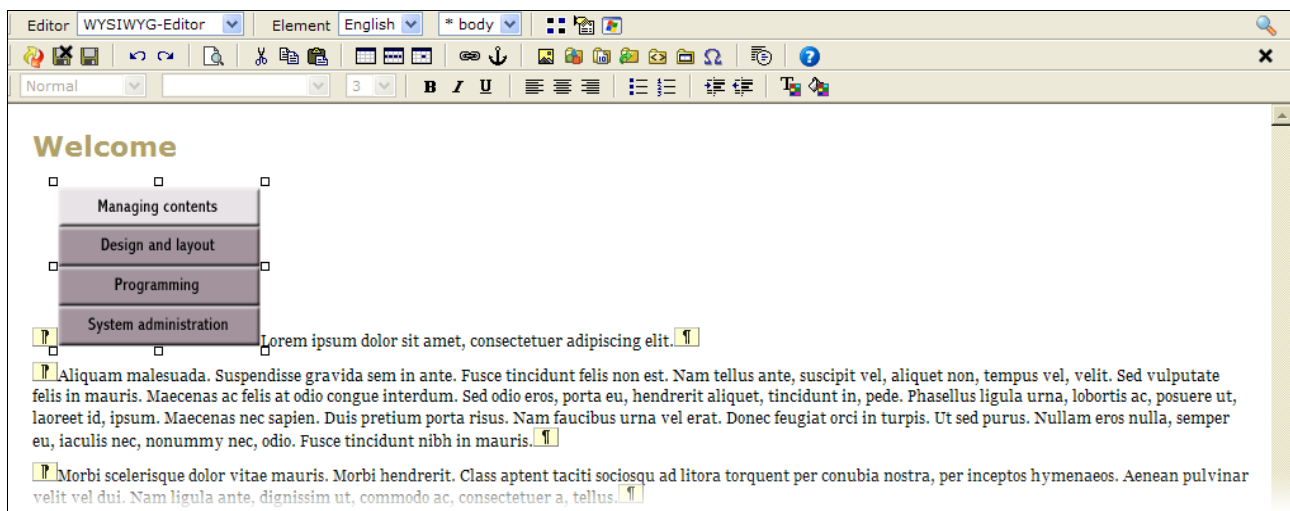


Illustration 73: To have the text flow around the image it should be placed inside the paragraph containing the text.

Using the markers is very helpful here – if you end up placing the image before the first paragraph marker (i.e. outside the paragraph) you will not get the desired result.



Select the image and click the Insert image-button. This opens the dialog box shown in Illustration 74, from here you can control various aspects of the image.

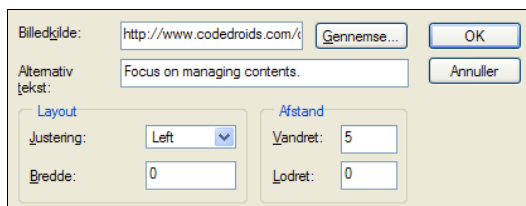


Illustration 74: Alternate text is required by the HTML standard – it serves as a help to visually impaired users that rely on screen reader software.

The source shows the web address (URL) of the image. You should not need to alter this value.

*This function is actually not aptly named as you should never use it to insert images. If you use the browse button in the dialog you will be able to select images from your local PC, but (hopefully) users on the Internet cannot see the contents of your hard disk, and thus no-one but you can see the image on the final page. Always use the image galleries instead of this function when you need to insert an image on the page.*

You should give an alternate text. This is a help to users that need "see" your web page by means of a screen reader. The screen reader will read out the alternate text on the image thus giving the visually impaired user an impression of what the image is showing. As a starting point the title of the image (as set when you uploaded the image) is inserted as the alternate text, but you can change it here.

**Alignment** controls the placement of the image in relation to the text. The most relevant options are `Left` and `Right` which controls the horizontal placement. The other settings controls the vertical placement of the image.

**Width** set the width border around the image (in pixels). The default is no border which is equivalent to a border of 0 (zero) width.

**Horizontal** and **Vertical** spacing determines how much space (in pixels) that gets inserted to the left and right or above and below the picture.

For our example set the alignment to left, and set the horizontal spacing to 5 pixels. This will result in the text flows to the right of the image as shown in Illustration 75.

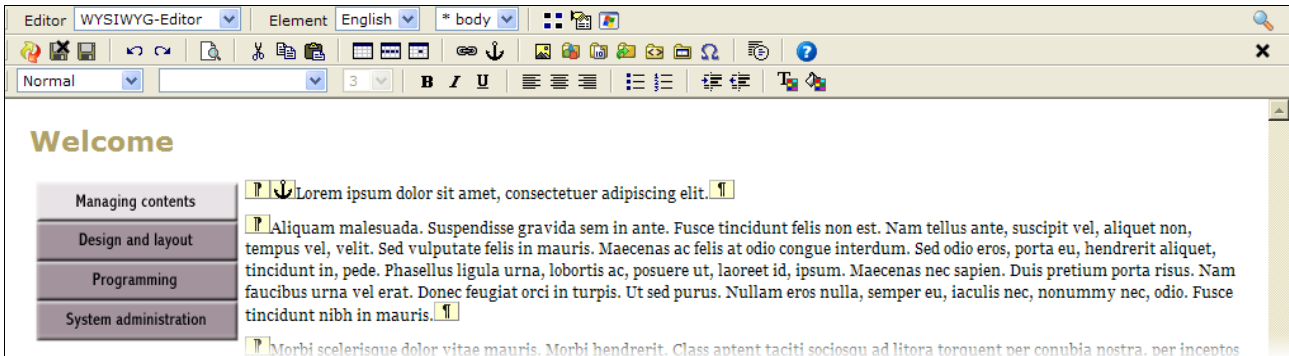


Illustration 75: Text can flow to the left or the right of an image.



Note the small anchor marker next to the paragraph start marker. This indicates where the image is anchored. This is necessary since the image displays in a different position than the one where it is really inserted. If you delete the anchor you will delete the image from the page.

It is a good idea to place the image as the first thing inside the paragraph – this lowers the risk that you accidentally deletes the anchor. The anchor is invisible if you have not enabled the **Toggle details** function, so if it appears in a more or less random place in the text inside the paragraph it is easy to accidentally delete the "hidden" anchor and thus the image.

### Image caption

You can use tables and images in combination. A good example is to use it for the image caption.

*Note that if your web sites defines a specific style or maybe HTML snippet in the HTML gallery for this purpose, then you should use that instead.*



Use **Toggle details** to show the makers. Place the marker just before the first paragraph marker of the paragraph holding the text that should flow around the image. Click on **Table** and create a table with 2 rows and 2 columns, no (0) border, and 1 pixel for both spacing values, Click **OK**.

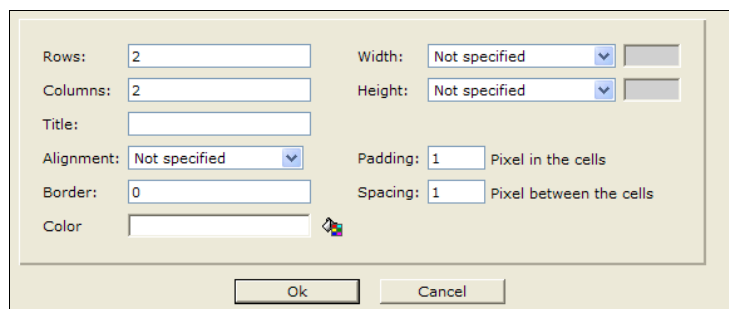


Illustration 76: If the border is set to 0 (zero) no border is shown.



Open the **Image gallery**, insert an image in the second column in the first row of the table. You can drag into the cell if you prefer to. Now place the text cursor in the first column (either row will do) and press the space bar a couple of times. This forces some space into the first column which will ensure some space between the image and the text flowing around it.

Select the table and use the small handles to resize the table so the width is as wide as the image dictates. Place the text cursor in the cell below the image (second column in the second row). Choose an appropriate style from the **Style** selector – we just use plain italicized text. Then enter an appropriate caption.



Finally select the table again and click on the **Align right**-button. Your editor should look something like the one shown in Illustration 77.

Illustration 78 shows how the final page looks like when using the demo template we using for these examples-

As you can see there a plenty of room for creativity when using tables. You could just as well mirrored the example so the text would flow to the right of the image. Or have the caption above or to the side of the image.

The styles defined by the template you use may offer different means to do the same, and if so, these are preferred over this approach.

*The described method will work with the various browser, but tables in HTML are intended for use with tabular data, e.g. numbers in rows and columns. Using tables for layout purposes, as we just did, is not in strict accordance with the intention. Thusly if your setup provides more suitable methods to control specific layout task such image captions, then you should use that method and only use tables for layout if there is no alternative.*

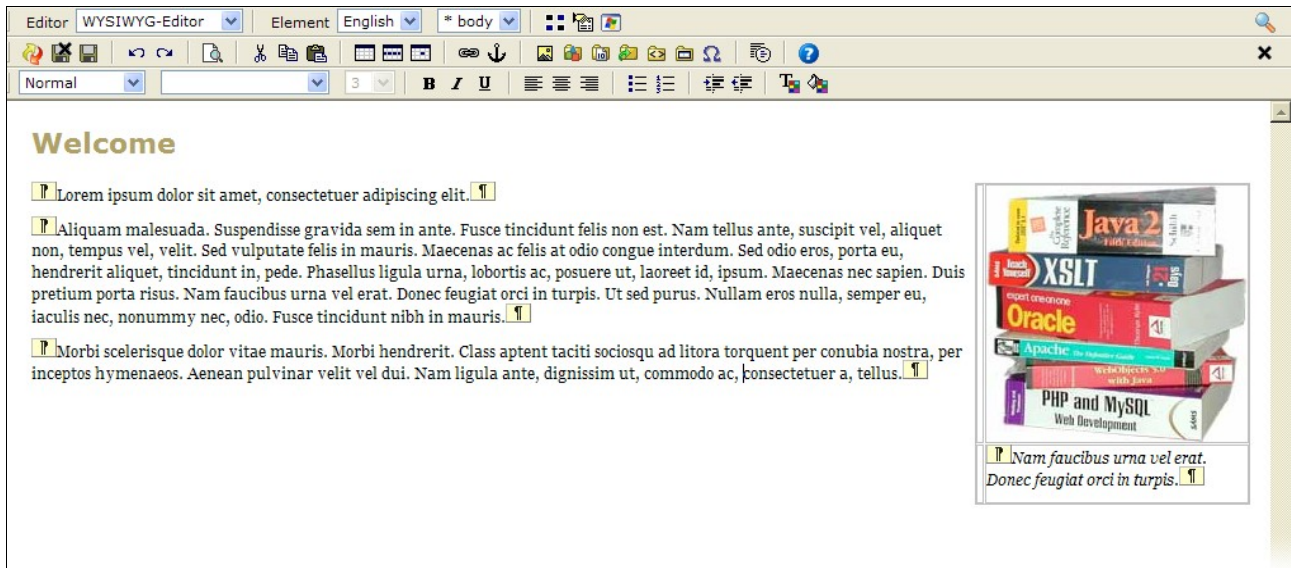
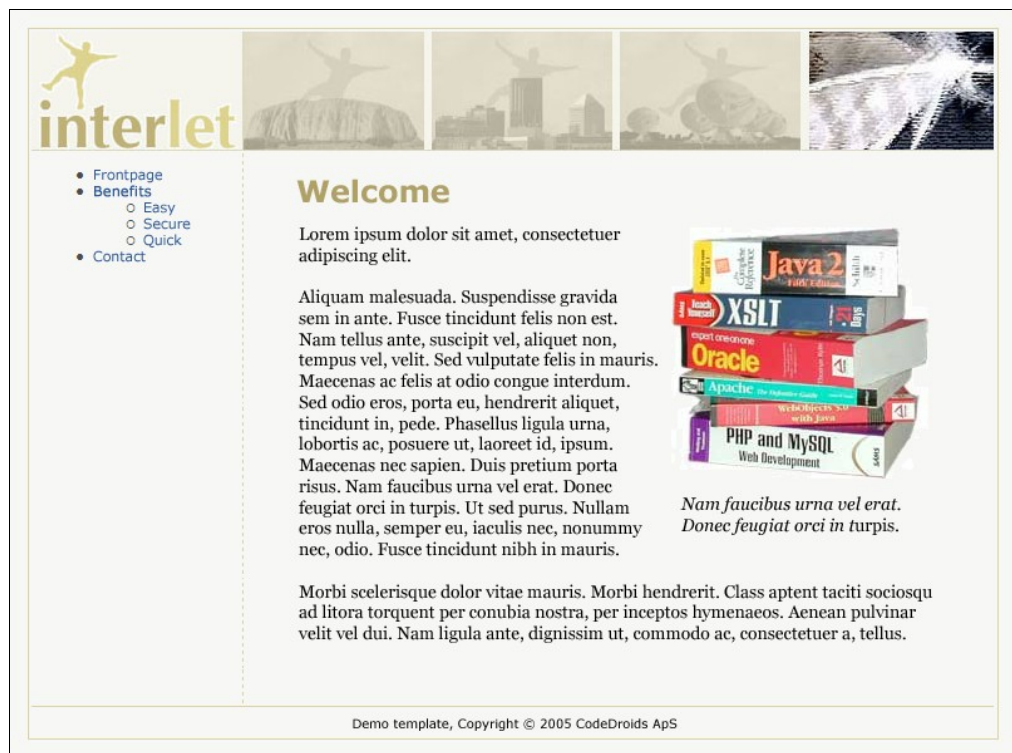


Illustration 77: Text can flow around more than just images, it works with other elements such as tables as well.



*Illustration 78: Things align nicely when using the table to layout the image and caption. The first column adds extra space between the image and the text.*

## 3.6 Links

One thing that web pages can do that you cannot on paper is linking to other pages. This feature is called a hyper link or just link. Links are pointers that includes an address of the page it points to. When the user click on a link the web browser will take the user to the address included in the link.

In OpenCms terminology there is a distinction between internal and external links. They are both links and works by the same mechanism, but the internal ones are under the control of OpenCms.

Internal links are links that points to other pages on your homepage, i.e. pages which are accessible through the explorer. OpenCms can check the validity of these links when it publishes a page, and warn you if there are links that points to non-existing internal pages.

External links are links to other web sites. It is recommended to use the link gallery for external links. Using the external links gallery OpenCms can check the external links as well, but does not do it automatically since it can be time-consuming.

Both types of links are hooked up on the pages by selecting some text, an image or maybe both and then assign as web address to it. The link text will typically be marked specifically on the final page so that the user can see that there is a link. Typically this is done by underlining the link text, but the actual appearance is controlled by the styles defined by the template on the page.

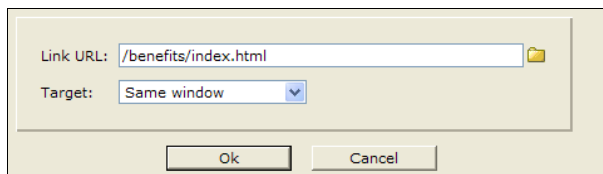
*The page editor will show the link with the correct style, but it will make it an active link – i.e. you cannot click on inside the editor. To test the link use the preview function instead.*

### Insert an internal link



Select some text in the editor so it is marked. Click on the **Link**-button, this opens the link-dialog box (Illustration 79). If you have not selected some text or an image you will get an error stating the fact.

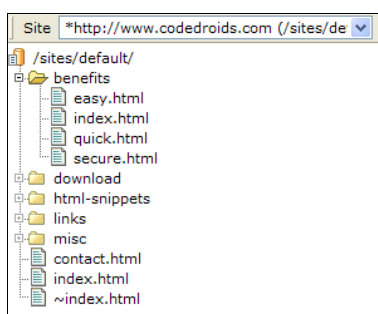
In our example we would like to set a link to the benefits section from the first word in the second line. Select the word in the editor and click the **Link**-button.



*Illustration 79: You can enter the path manually or use the Select... button browse for the file or folder.*



Click on the **Select folder...**-button and opened the `benefits`-folder (using the small **+**-button) and then click on the `index.html` file – see Illustration 80. This insert the path into the **Link URL** field.



*Illustration 80: The resource tree shows the files and folder available.*

**Target** should be `Same window`. This setting tells the browser to show the new page in the same window as holds the link.

Click **OK** to return to the editor window – the text now appears like a link – in relation to the demo template we use this means it underlined. You can test the link by using the **Preview**-function

## Insert an external link

Before we described the preferred method to work with external links, we just mention that you can insert external links the same way as internal link.

Follow the procedure described above, except this time you cannot use the **Select folder...** function as the external page is not listed in the file browser. So here you have to type in the full web address (URL) in the **Link URL** field.

As an example select the first two words in the first line, click on **Link** button. Enter the following: `http://www.codedroids.com`. as shown in Illustration 81. Because of the URL points to a different web site it is considered an external link. Note that the **Target** is set to `New window`, which means the browser will open the page in a new window.

*It is often a good idea to open external links into a new window. This way, when the user is done with the external page and closes the new window he will be back with the page on your web site, since this window is still open.*

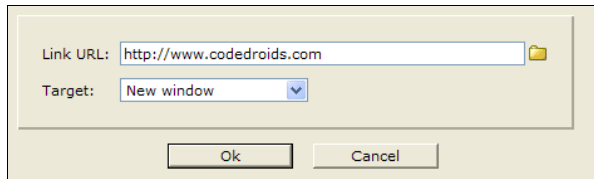


Illustration 81: The URL decides whether a link is considered to be internal or external.

This method works, but the preferred method is to use the external links gallery for these kind of links. The above method has the problem that if you have entered this particular link on a number of your pages and then the URL of the page changes. Then you would have to go through all the pages to change the link.

Had you added the URL to a link gallery and then used the gallery to place the links on the pages, then you would only have to change the URL in the link gallery and suddenly all the links in the pages would point to the new URL. If you use an external link on many pages this feature can save you a lot of work.

The external link gallery works much like the image gallery and is describe in detail in Chapter 4 Galleries. Here we will use an existing link gallery in our examples.



To insert an external link you can select some text as before or you can just place the text cursor where you want the link to appear. If you do not select some text then the link text will be the title of the external link which then will be inserted in the page. In our example we have placed the cursor at the end of the first line. Click on **External links gallery** to open the gallery window.

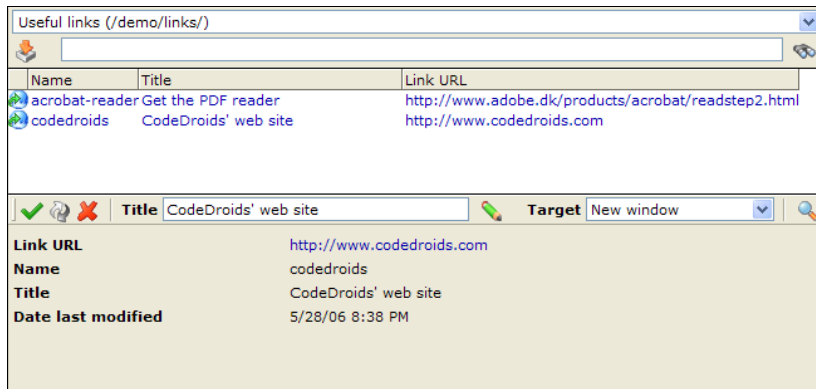


Illustration 82: Before you insert an external link you can select the target and set a new title.

In the example we have chosen CodeDroids in the gallery window.



Then click **Insert** – this inserts the link on the page and closes the window. Since we did not select some text before we opened the window, the title of the external link is used as link text.(see Illustration 83).

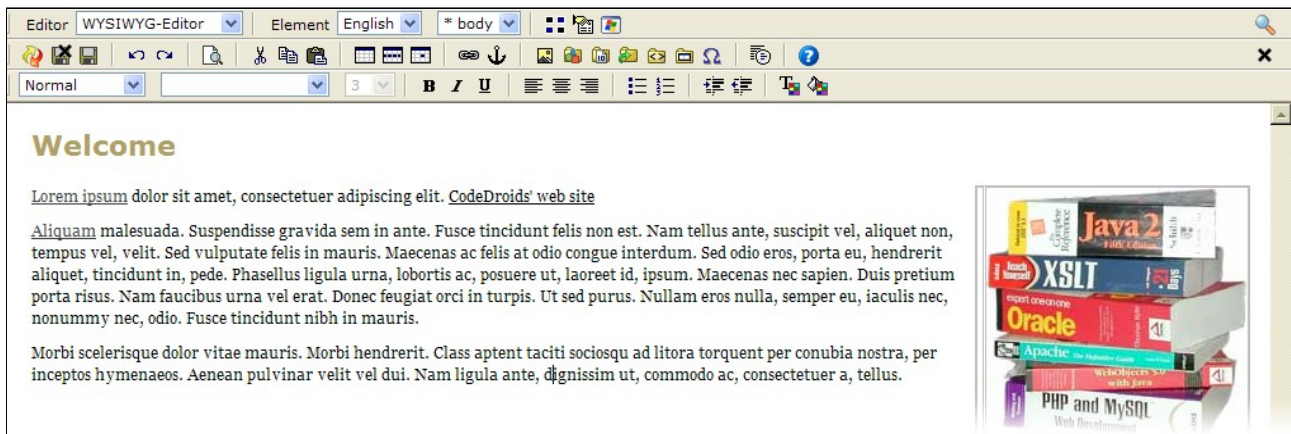


Illustration 83: The actual appearance of the links on the page is controlled by the styles defined as a part of the template used for the page..

External link galleries adds another advantage: you only have to type the URL once. This is much less error prone than if you had to type e.g. `http://www.adobe.dk/products/acrobat/readstep2.html` every time you needed it on some page.

## Edit or delete link



You can use **Link**-button to edit or delete links. You have the usual options (see Illustration 84).

If you edit a link put on the page via the external link gallery you will notice that the URL does not show external web address. If you need to edit this address you should do it in the link gallery, not on the page. Other types of links can be edited her.

For all types you can set the target here.

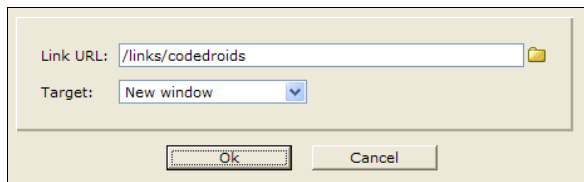


Illustration 84: External links entered through the link gallery does not show the external address – to edit the external address edit in the external link gallery instead.

Generally it is useful to set the target to a new window on external links. In most cases the New window-target should be used. This will always open a new window on the users computer when he click the link.

Here is an explanation of the different target options:

- Same window: the new page is shown in the same window as the link is.
- New window: the linked page opens a new window (typically in front of the window that holds the link). When the user closes the new window he will be "back" in the original window (showing your site).
- Top window: or rather the out most window. This is an option that is useful if you work with the frames – an HTML technology that is best not used on regular web pages.
- Named window: This allows you to enter a name, e.g. mywindow and all links with that target

will show in the named window. Only one new window is opened (unless the user closes it in between, then a new one will be opened the next time he click on a link with the named window as a target). This is useful for situations where you expect the user to go through several links on the page and do not want to fill the users screen with new windows. An example could be links for a list high-res images where you name a window something like `imageviewer`. The user then only have two windows open – the one with the page and the one showing the images as he click on the links on the page.

### Delete a link

Independent on how the link is set on the page, this method will remove it again.



To remove the link from the text you must select the link text in the editor and click on the **Link**-button. Clear the **Link URL**-field so it is empty and then click **OK**. The link markup is now removed from the page and the text will appear as normal text.

If you want to remove both the link and the text in the link, then you can simply delete it after selecting it. This will remove the link text as well as the link.

### Link to a specific part of a page

Hypertext links has a feature that enables then not only to address a given page, but also to address a certain place in the page. This can be an advantage if you have a very long page with some logical sections you can address.

It is a two step process. The first step is to mark the wanted position on the page that you want to link to. This mark is called a named anchor, the anchor is not visible on the final web page. The second step is than to link to the page as usual but also to include the name of the named anchor in the URL that you enter on the link

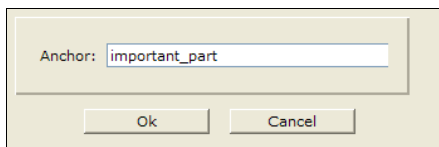
The web browser will then go to the referenced page and try to position the contents of the window such that the position where the named anchor appear is at the top of the window (this may include scrolling the contents).

### Insert a named anchor

Select some text at the position you want the browser to jump to on the page.



Click on **Anchor**-button. Enter the name for the anchor in the **Anchor**-field (do not use space and other special characters). As an example we enter `important_part` as the name Then click **OK**



*Illustration 85: A named anchor marks a spot in a page to which links can reference.*

You now have a name anchor set on the page which you can refer to when you insert links to the page.

*Typically the named anchor is not supposed to change the style of the text on which it is set. But the style may be defined in such a way that the style of the selected text changes. If this is undesired, then it is possible to add an extra space to the text and then select only the space when setting up the named anchor – this way the real text is left unchanged.*

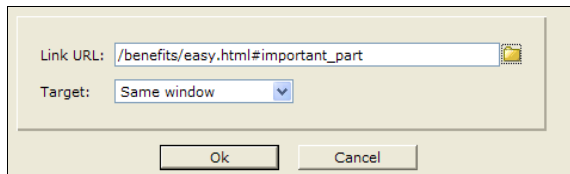
### Link to named anchor

This is basically the same procedure as for links. Typically it will be for internal links because you

know what named anchors you have added to those pages. External pages may require some research to find the named anchors on the page, if there are any at all.

As an example we assume that there is a named anchor on the `/benefits/easy.html` page. Select the page to link to by selecting it with the **Folder selector...** Next you have to edit the path it inserted in the **Link URL** field. At the very end at a number sign (#) followed by the name of the anchor (see Illustration 86). Make sure you do not add extra space or the like.

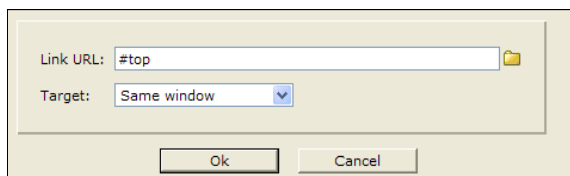
As this is a link like any other link, you have to consider the target as well – here we have an internal link so we use the `Same window` as target.



*Illustration 86: To target a specific part of a linked page, add a number sign and the name of the anchor to the URL.*

You can use named anchors internally on a page as well. This could be a "Go to top" of the page link. To do that you should first place a named anchor at the top of the page using the **Anchor**-button, name it `top`.

Next insert a text or likewise – `Go to top`, select it and click on the **Link**-button. Then enter the number sign (#) followed by the anchor name, see Illustration 87. It is strongly recommended to use the `Same window` target in this case, otherwise the user will be confused if going to the top also opens a new window.



*Illustration 87: When jumping to another place on the same page the target should always be `Same window`.*

## Email-link

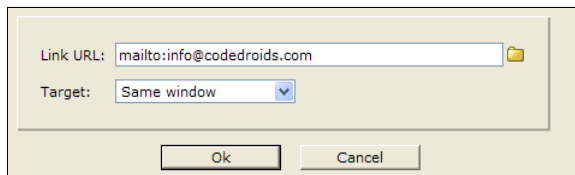
Another type of link is the `mailto` link. This type of link can be used to put an email address on the page. When the users clicks on a `mailto` link their email program is started. The result is the user gets a ready to use compose window where the Mail To field preset with the email address you set on the link. This is very convenient for the user as he gets to use the email program with which he is familiar as opposed to using specific entry forms on the web page itself.

Also, it is very convenient for you to use `mailto` links. All you have to do is to type in the email address and the editor will recognize it as being a such, and automatically insert the appropriate `mailto` link.

Besides this fully automated approach you can make this type of links just as you do for other types of links. But rather than enter the normal type of URL, you enter a special URL with the email address. This way you can set the `mailto` link on an image or some arbitrary text rather than the email address itself (though it is still a good idea to let the user see the email address directly on the page).

Illustration 88 shows an example where the email address is `info@interlet.dk`. The value in **Link URL** field must start with `mailto:` in order for the address to be recognized as a `mailto` link. The

actual email address must follow immediately. The **Target** field has no relevance here, since clicking on a mailto link always result in a new window (the email programs compose window).



*Illustration 88: The mailto: part is what sets this apart from a normal type of link.*

*There is a catch though when it comes to email addresses. There exists robots (programs built to visit and read web pages electronically) that collect email addresses from web pages. Typically the email addresses collected this way ends up in the hands of spammers. Counter measures exists, some requires manual intervention by you while others work automatically. If this is a concern, please make sure that you know what kind of counter measures are in place on your web site before putting email addresses on the pages.*

## 3.7 More editor functions

---

In the following there is a short description of some of the other editor functions you can see in Illustration 63. Note that the specific setup of your system may cause you screen to look a bit different.

### Editor selector

You can switch between the WYSIWYG editor (the page editor) and the source code editor which shows you the actual HTML codes.

### About elements

A page file can consist of several parts or elements. There are two levels of elements. The top level consist of the various languages that are setup on your system.

For each language you can have a number of elements that is relevant to the chosen template. Besides the main text part (selected by default) you could have some other parts on the page. E.g. you could have a "See also" element. The template would then use this to put the contents of that element say at the top right part of the page.

Exactly how many languages you have to choose between and how many elements there are and how the elements are used depends on your setup.

### Language selector

This enables you to edit the different languages the page must be available in. This requires a proper setup of the system. In this case the editor will automatically choose the appropriate language. You can still switch to another language by means of this selector.

### Element selector

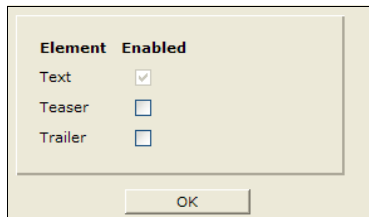
At the very minimum there is one element per language. This is typically called Text, but this is controlled by the template so different templates may choose to label it differently, as well as they may choose to define more elements. With selector you can switch between the various elements and edit them.



## Elements

- ■ This button opens an overview over the available elements. Apart from the default, mandatory element (labeled `Text` in Illustration 89) these are all optional. You can select which are active, and perhaps more importantly you can deactivate an element.

When you choose an element in the element selector this element is automatically activated for you. Even if you do not enter any text into the element. Exactly what this means depends on the template in question, but often template react differently depending on a element is active or not – an active but empty element is in this case treated as being active. For this reason it is valuable to be able to deactivate an element explicitly.



*Illustration 89: There is always one default and mandatory element which cannot be deactivated.*

## Properties



Pops up an window similar to what you see when you chooses **Properties** from the context menu in the explorer. Simply an alternate way to edit the properties on the file.

## Preview



Previews the page in a new browser window. This allows you to preview the changes you have made without having to save them first.

Actually it saves the changes from the editor to the working copy (as discussed in the beginning of this chapter) and then displays the working copy in the news browser window.

## Save



Saves the changes you have made in the editor. Until you save your changes they are only stored in the memory of your web browser. Should the browser or the PC it is running on crash, the changes are lost. Luckily this is rare, but if you are writing a long article you can use this function to save it while you are working on it.

You will remain in the editor window after the save is done, but your cursor will be position at the top of the document.

## Save and exit



Same function as the **Save**-button, except that it exits the editor and shows the explorer again (or whatever it showed before you invoked the editor).

This step also removes the temporary working copy of the original page.

## Undo



The editor can undo previous actions. From within the editor you can undo changes you have made since the last time the file you saved it or when you opened it. If you have saved a change and want to undo that change, you should use the **Undo changes** function from the context menu in the explorer.

## Redo

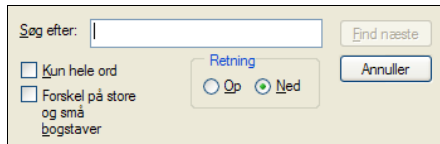


Redo the last undone change.  
So if you want to undo what you just undid then click **Redo**.

## Search



Opens a search panel, where you can enter a search text.  
It searches in the text currently in the editor.



*Illustration 90: You can search in the contents you are currently editing.*

## Copy



Copies the currently selected text and images onto the pasteboard.

*It can be helpful to use the Toggle details function when copying from a complicated layout. This way it easier to make sure that you get the complete paragraph or whatever selected before you copy.*

## Cut



Copies the selected text and images onto the pasteboard and then removes it from the page.  
You can either paste it back in or use the **Undo** function if you want to undo the cut.

## Insert



Pastes the current contents from the pasteboard into the page.  
The contents of the pasteboard is inserted where the text cursor is placed.

## Download gallery



The Download gallery is a gallery similar to the image gallery. It is used for the types of files which cannot or should not be embedded in the page. E.g. a PDF-file.  
When you use the gallery it will insert the appropriate link on the page so that the web users can click on the link in order to download the document.

## HTML gallery



This gallery can be used to hold various useful snippets of HTML. When using the gallery it will simply insert the prepared HTML into the page.

This is both useful for complicated HTML constructions or simple snippets that need to be reused over and over, where the few clicks needed to insert it from the gallery make it worth the while.

## Special characters



If you need some of the special characters supported by the HTML standard you can use this function to get to them. Place the text cursor where you want the character to be placed and then click on the **Special characters** button. Click on the character to get it placed on the page.



Illustration 91: When you click on the wanted character it is inserted on the page..

## Close



This exits the editor and returns to the explorer (or to where ever you started the editor from). This step also removes the temporary working copy of the original page

If the editor has registered changes you will be prompted to acknowledge that you are about to throw away the changes made in the editor. You can cancel the action in which case you will be returned to the editor.

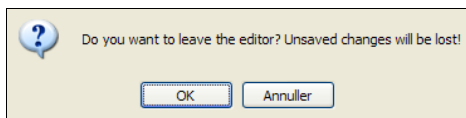


Illustration 92: If there are registered changes in the contents the editor prompts you to acknowledge that you are about to throw away the changes.

*Note there is a significant difference between the editors close-button and the close-button on the window itself. You should never use the latter while being logged into OpenCms. In particular if you close the window that way while being inside the editor, the working copy file will not get removed. Subsequently when you get back into OpenCms you will notice that the working copy is visible in the explorer. If you are sure no-one else is editing the original file you can delete the working copy file manually. But typically it is sufficient to simply open the original page again with the editor and then choose the right close-button this time. OpenCms will then remove the working copy file as a part of its normal routine.*

## 4 Galleries

---

The previous chapter showed how you use the galleries from within the page editor. Here we will look at how you create and manage the galleries.

OpenCms provides five types of galleries:



**Image galleries** is used for images that will end up on the pages. Typical the images are relatively small in size, such that they fit the layout on the home page, or they may be thumbnail images that provides a small version of a much larger image and which is linked to the large image.



**Download galleries** are intended for special types of files or large images. Neither of which is intended to be a part of the pages, but rather to open in a separate window or application. Examples include high resolution images and PDF files. Whether they gets downloaded or shown somehow on the web users PC depends on the web users setup.



**HTML galleries** provides a convenient method to speed up repetitive task or to enable complex task to be handled. This is done by providing the relevant HTML code as an entry in a HTML gallery. The user then uses the functionality simply by inserting the code via the gallery into the page editor.



**Table galleries** are similar to the HTML galleries except the focus is on tabular data, such as lists or matrices.



**External links** galleries eases the use of links to external sites. First of all by providing ease of reuse. The user do not have to remember the complete URL for the external page, but can rather just pick it from a list of already defined external links. Secondly the system works in such a way, that even if an external link from the gallery has been used on many pages on your site, all of them can be set to point to a different external page simply by changing the URL in the gallery.

All types of galleries are basically special kinds of folders, which can be place anywhere in file system. When using galleries from within the editor you will be presented with all the galleries of a given type that you have access to.

### 4.1 Image galleries

---

If you want to put images on your pages the best way to do so is to use an image gallery. This way you can simply drag the wanted image from the gallery window into the page.

The image gallery also has performance benefits. For one thing it helps ensure that if you use the same image more than once on your homepage, the web users browser will only load it once. Also images in galleries are handled specially by the system such that they can be served to the web user in an optimized way.

#### New image gallery



Since galleries can be placed anywhere you like, first go to the folder where you want it. Here we will create a `misc` – there is a good chance you will find use for an gallery for miscellaneous image sooner or later. We choose to place it in the root folder. Click on the **New** button, this presents you with an dialog box as shown in Illustration 93.

Select **Extended folder** and click **Continue >>** – you will now be presented with a list of the special types of folders as shown in Illustration 94. The list may differ from the one shown here depending on the setup of your system.

Select **Image gallery** and click **Continue >>**.

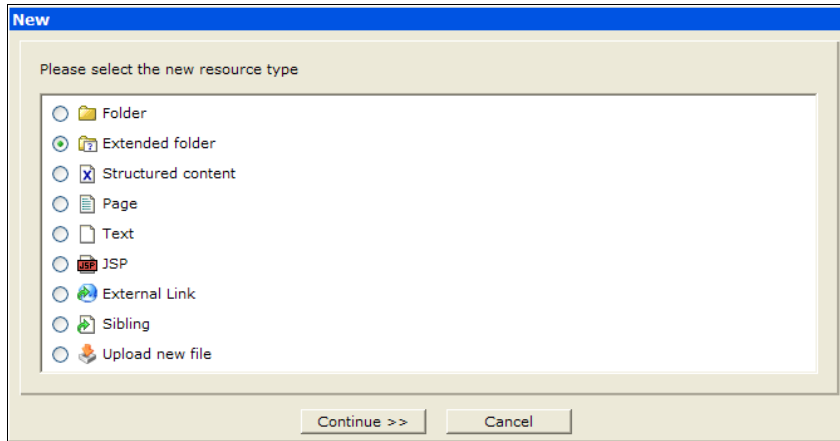


Illustration 93: Galleries are special types of folders.

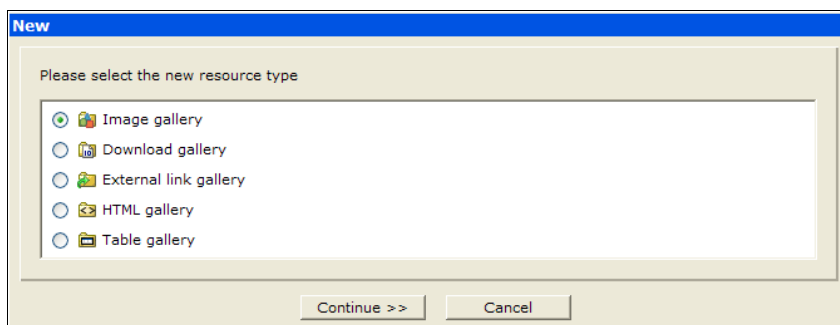


Illustration 94: Select the wanted type of gallery from the list.

Enter the name of the gallery into the **Name** field – since the gallery name is a folder name the usual restrictions in the name must be taken into account, i.e. no special characters or spaces. Click **Continue >>** and enter the title. The title is not restricted and can contain spaces and so forth. The title is listed when you later pick a gallery from within the page editor. Usually a galleries should not be listed in the navigation so make sure the **Add to navigation** is unchecked.!

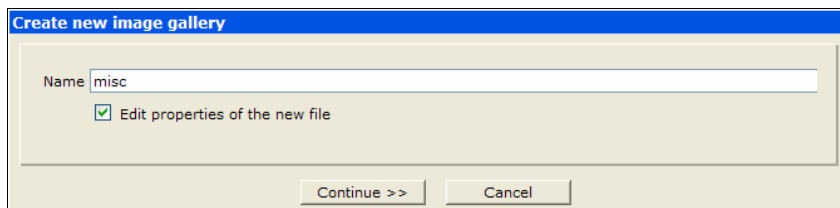


Illustration 95: Extended folders need a name like any other type of folder..

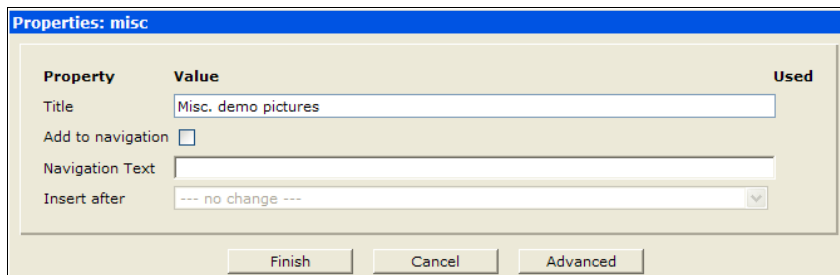


Illustration 96: The usual folder properties applies to extended folders as well. Generally galleries should not be part of the navigation.

Click **Finish** to create the new gallery. You are then return to the explorer – and the explorer shows the new gallery folder as shown in Illustration 97. Since a gallery is just a special kind of folder, it eventually need to be published.

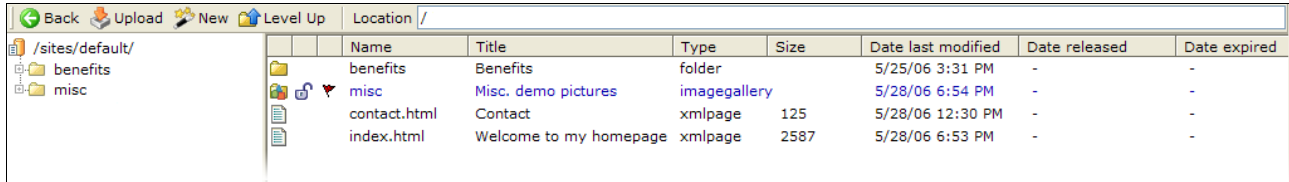


Illustration 97: Galleries are listed like a special kind of folder and can be handled like any other type of folder.

## Upload image

The step above created a new empty image gallery. The next step is to upload some images to the gallery. This is done like shown in 2.12 Upload (p. 28). Go into the gallery folder and upload some images.

As an example we have uploaded four images as shown in Illustration 98.

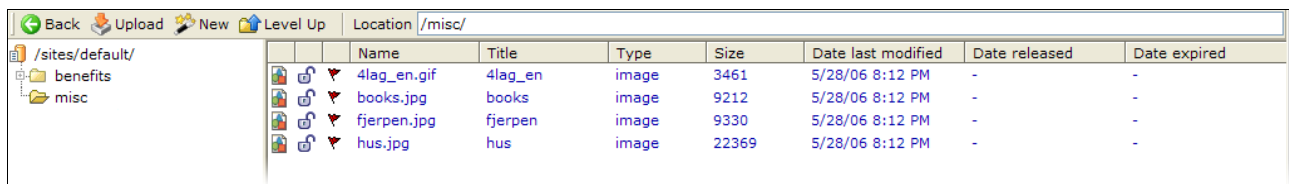


Illustration 98: Images are also files and eventually need to be published to be visible on the public part of the home page.

To publish the gallery and the newly uploaded images, go one **Level Up** in the explorer and publish the gallery folder. This will publish the folder as well as the images inside it. New galleries do not have any dependencies and does not appear in the navigation, so you can publish them without any visible effects on the public web site.

*If you upload an image to a gallery, and subsequently uses that image on a page, publishes the page, but forgets to publish the image, the image will not show on the public web site. You will notice that there are warnings during the publishing process, but if you choose to ignore them the online version of the page now includes an image which is only present in the offline version.*

*To fix the problem simply publish the image. Instead of just publishing the page you could have published the project instead – this would have solved the problem since the image would have been published as a part of the project.*

If you want to check the contents of the gallery via the special gallery window you can do so by selecting **Open gallery** from its context menu in the explorer.

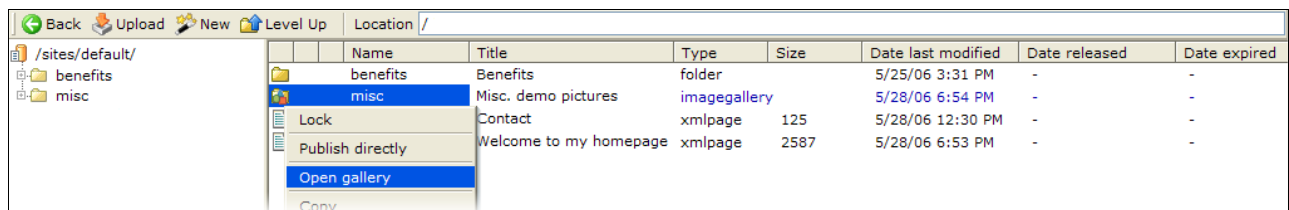


Illustration 99: As an alternative to viewing the files in the gallery view you can show the contents galleries via the gallery window.

Illustration 100 shows how the contents of the gallery is shown in the gallery window.



When you use the gallery window outside the editor the **Insert** function is disabled since there is no place to insert the images from the gallery.

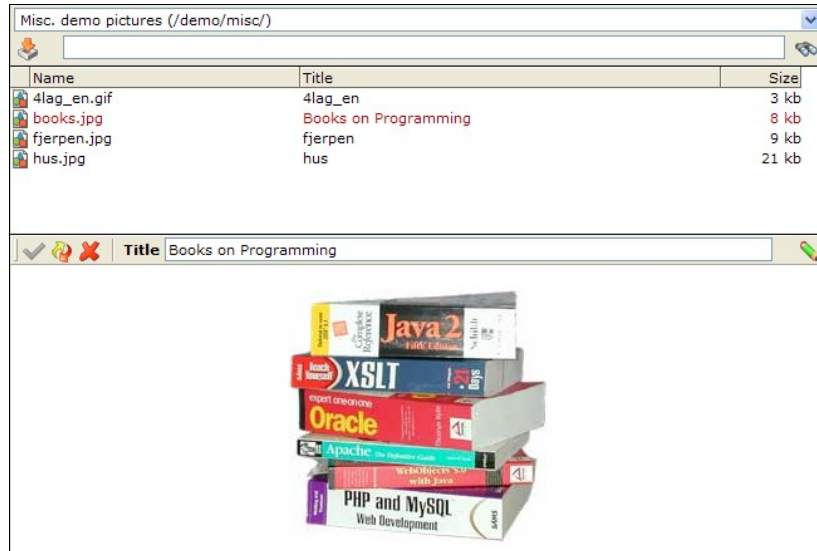


Illustration 100: The Insert-function is disabled because the image gallery is opened outside the editor – apart from that it works like when opened from within the editor.

You can adjust the size of the split screen by dragging the divider between the upper and the lower part.



You can add new images to the gallery with **Upload new file** function. The upload function works the same way as if you upload a file in the explorer – see 2.12 Upload (p. 28).



If you have a lot of images you find the search function useful. Enter a search word and click on the **Search** button. The list of images is now filtered so it shows those images that has the search word in the name or the title.

To get back to the complete list of image, simply clear the search field and click on the **Search** button. This will list the images in the gallery.

To work with the individual images select one of them from the list.



You can change the title of the image by typing in the Title field and then clicking on **Change value to**. This will save the change to the file – this is equivalent to set the title property on the file in the explorer. If you have a number of images in a gallery that need to have the title changed it is easier to do it from the gallery window.



You can publish changes and new image directly from here with the **Publish resource**-button. This is equivalent to do a **Publish directly** on the file in the explorer.



Similarly you can delete an image. Again this resembles deleting it from the explorer. So the same rules applies as described in 2.10 Delete resource (p. 24) when it comes to deleted previously published resources.

Please refer to 3.5 Images (p. 41) for a instructions on how to use the image gallery from within the page editor.

## 4.2 Download galleries

The basic idea with the download gallery is the same for the image gallery. The difference between the two is that download galleries are intended for files that should not be embedded into the page, but rather be downloaded or be shown in a separate window or application.

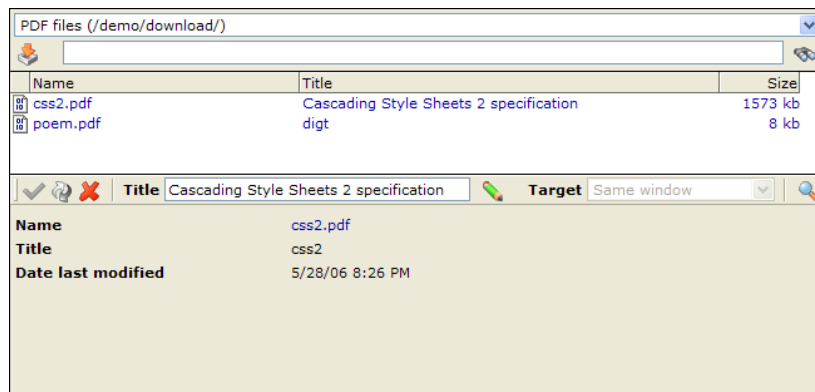
Typical examples would be high resolution images, PDF files and ZIP files. Other special types of files are supported as well, such as office files such as Word documents.

*What exactly happens on the web user PC depends on the particular setup on that PC. If you link to a PDF file in the download gallery on a page, then it may appear in a new browser window or it may be opened in the Acrobat Reader. If you link to a Word document, it may open in Word on a Windows PC while it may not open at all on a Mac.*



The process of creating a download gallery is the same as for the image gallery. You should choose the extended folder type be **Download gallery** though (see Illustration 94).

You can use **Open gallery** from the context menu for download galleries as well. This opens the download gallery window (Illustration 101).



*Illustration 101: The download gallery window will not attempt to show the contents of a selected file as it is not guaranteed to be displayable.*

The download gallery window look like the image gallery window, except it does not show the contents of the selected file in the lower part of the window. This is because there is no guarantee that the browser can display it. Instead it lists the basic information about the selected file.

When you use the download gallery with the page editor it inserts a link rather than an image. The web user then click on that link on the web page to start the download.

Files in download galleries are handled specially by the system such that they can be served to the web user in an optimized way.

## 4.3 External links galleries

External links is defined as links that point to other web sites. This can be the front page or some specific page buried deep down on the other web page. Especially in the latter case is it an advantage to use the external links gallery as it:

1. Stores the long and complicated URL address once and let the user pick it from the gallery again later on – the user do not need to memorize the long URL.
2. Makes it easy to fix the situation if it happens that the referenced page is moved on the external web site. It is only necessary to fix the address in the links gallery. All pages using the link in question will automatically start using the new corrected URL.

A external links gallery holds entries of the type `External Link`. You may think of these as a "shortcut" or at least a short name for a possible long URL address to an external web page.



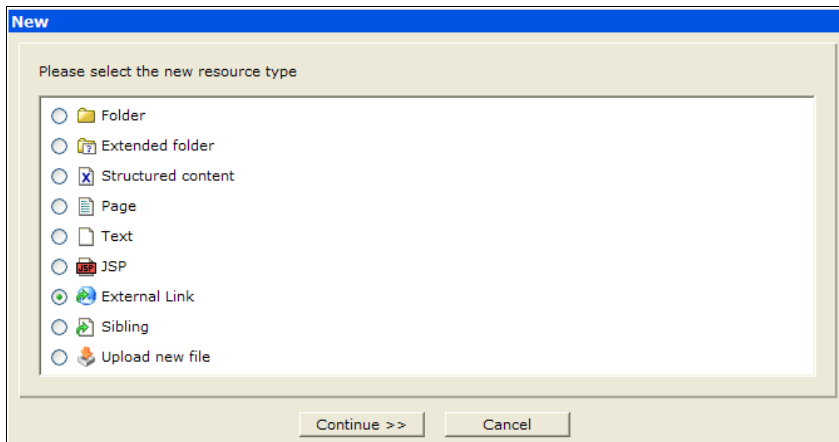
External links galleries are created in the same as an image gallery, except the type of the extended folder must be **External links gallery** (Illustration 94).

In the new gallery folder you then create new external links. The external links are a type of resource and can be created anywhere, but in order for an external link to be considered a part of a link gallery



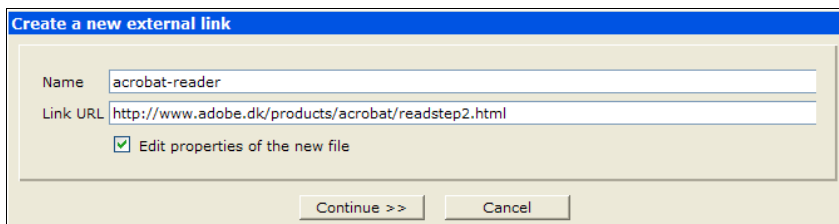
it must be inside one such gallery folder.

Click on **New** and choose **External link** as shown in Illustration 102.



*Illustration 102: An external link is a type of file that include the URL address of an external web page.*

The name of the link is the name under which it is stored in the explorer. So the name must follow the usual guidelines, i.e. not include special character and spaces. There is no specific file extension associated with the external link type, so you can decide not to give those names a common extension.



*Illustration 103: The URL should include the part that is called the protocol – in this example it is "http://".*

The **Link URL** is for the web address of the external page. The easiest way to enter the value is to point you web browser to the appropriate external page and the copy it from the address field in the web browser into this field. This way you are sure that the address is OK. This approach also ensures that the **Link URL** field includes the protocol part. The protocol part if the `http://` for plain web pages, there are different less common protocols.

*Note that some home page uses a problematic feature in HTML called frames. Among other things frames makes it difficult to get hold of correct URL. This is because the address field in the web browser does not change when you navigate inside frames.*

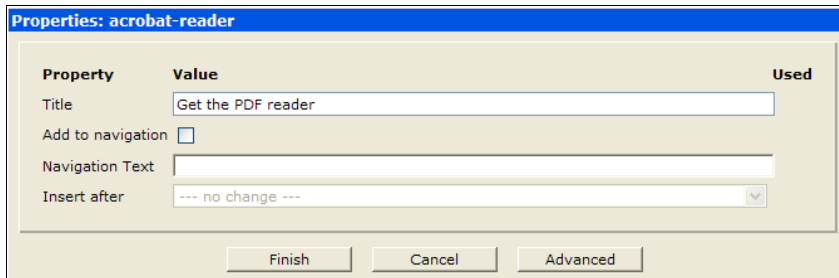


Illustration 104: Per default the title of the external link will be used as the link text when you insert such a link on the page in the page editor. Giving it a useful title can therefor save some work later on.

Usually you should check the Edit properties of the new file as it is recommended to give the external link a useful title. This is of course a good idea in any case, but specifically – when you insert the link on the page in the page editor – the title will be use as the link text. So to insert an external link to say Get a PDF reader here you would only have to insert the external link via the external links gallery and you will have the link and text ready to use.

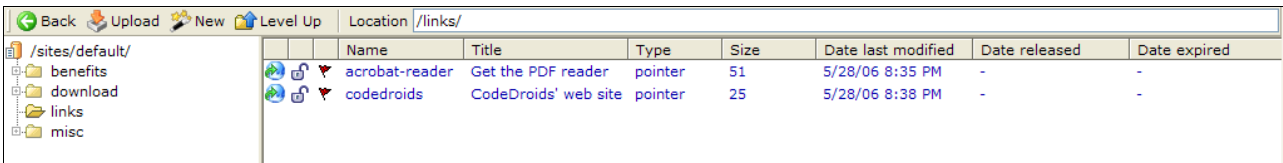


Illustration 105: External links are files of the type pointer.

As for other types of galleries you can open the gallery window for a gallery folder by selecting the **Open gallery** function from the context menu.



The external links gallery window includes a **Preview** button. Clicking on that will open a new browser window showing the linked page.

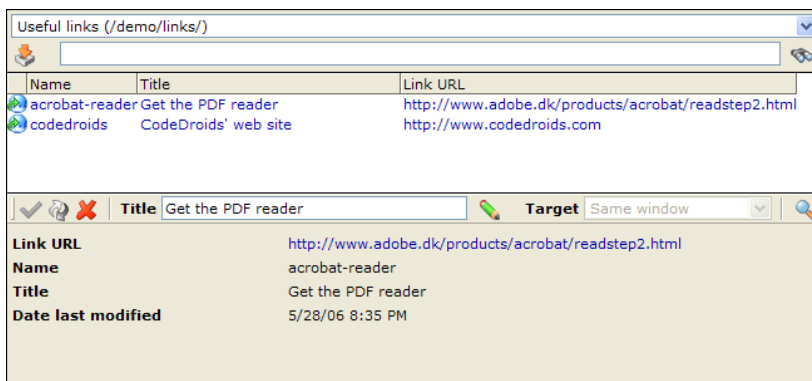


Illustration 106: Use the preview button to check that the URL is correct.

3.6 Links (p 47) shows how to use the external links gallery from within the page editor.

## 4.4 HTML galleries

HTML galleries are useful for storing various predefined pieces of HTML code. Either for complex HTML code that is hard to make in the WYSIWYG editor or small snippets that maybe are fairly simple but still time consuming because they are used again and again.



You create an HTML gallery the same way as an image gallery. The type of the extended folder must be **HTML gallery** (see Illustration 94).

The types of documents inside the gallery are plain text files. The files may contain HTML and you may give them the `.html` extension in the filename. But they must be of the type `Plain`. – see Illustration 107.

Plain text files are edited with the source code editor, so you need to know about HTML code to edit the snippets.

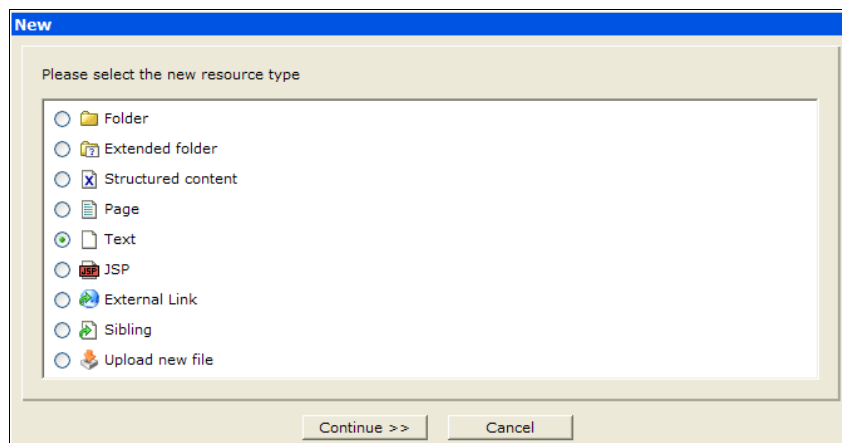


Illustration 107: The files inside HTML galleries must be plain files.

Illustration 108 show a small example – the HTML snippet inserts a table set up so it can be used to place the picture caption below a picture. Basically this snippet does the same as described in 3.5 Images (p. 45). The preview provided in the lower half of the gallery window does not really look like one should expect. This is because many of these snippets only looks correctly when they are use in the proper context. Also in this case, the real image is missing – this would only be inserted once the snippet is places on the page. Similar the caption also need to be edited since it is just a dummy text that is included in the snippet. But compared to the description presented earlier, you only need to call up the HTML gallery, select the right snippet and insert it on the page – then add the right image and caption text.

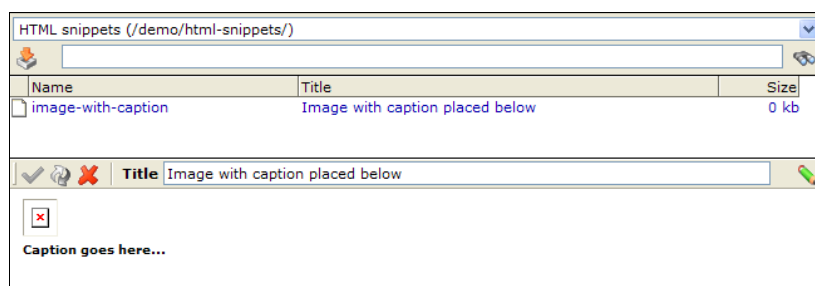


Illustration 108: The preview of the HTML snippet often look a bit strange. The snippets often need to be in a certain context to display correctly – inserting the snippets on the page in the editor causes them to display correctly.

There are some restrictions on the HTML that can be used in the gallery. In particular programmatic content such as Javascript and the like will be problematic. It is outside the scope of this guide to cover that subject.